

Minister for Foreign Affairs Mr Brian Cowen T.D.
Speech at the launch of Just Forests' Good Wood Policy Guide
Wednesday 25th September 2002

(Royal Institute of the Architects in Ireland (RIAI), 8 Merrion Square, Dublin 2.)

I am very pleased to be here this evening at the launch of the Good Wood Policy Guide. The Guide will help promote a more responsible national approach to the use of timber and wood imported into Ireland by wood importers, architects, designers and consumers in the housing and interior decoration markets.

As Minister for Foreign Affairs I have responsibility with my colleague, the Minister of State, Tom Kitt, for the implementation of Ireland's development cooperation programme. Sustainable Development, commonly defined as "*development that meets the needs of the present without compromising the ability of future generations to meet their own needs,*" is fundamental to our development cooperation policy.

The Good Wood Policy Guide is an excellent example of how focussed national initiatives involving Government, consumers and producers can make a major contribution to the national and international pursuit of sustainable development.

At the recent World Summit on Sustainable Development in Johannesburg, the international community adopted a concrete action plan aimed at implementing sustainable development policies across all relevant economic, social and environmental areas. The publication of the Guide, so soon after the Summit, sets an example for other sectors of the economy where our daily activities have an impact on sustainable development. The Guide clearly shows us how with some thought, imagination and commitment we can bring sustainable development down from the high-flown rhetoric of UN conferences to the reality of our everyday activities. The simple act of selecting wood for construction can have profound and far-reaching implications in countries where tropical woods are under threat.

The *Good Wood Guide* informs us that tropical wood to the value of €133 million annually are imported into Ireland. There is, at the same time, no evidence available to tell us whether this wood has been legally or illegally cut or whether the forests from which it originated were sustainably managed or not.

Despite the fact that we are a small country, the volume of tropical wood we import represents the equivalent of cutting down 30 acres of tropical forests *per day*

Tropical Forests play an environmental role of global importance and their destruction should be of immediate concern to all of us. They absorb vast amounts of carbon from the atmosphere thus reducing greenhouse gas levels. They are destined to play an important role under the Kyoto Protocol on Climate Change.

Tropical forests also provide sustainable livelihoods to indigenous peoples who have lived in and managed their forests for countless generations. They provide the habitat for much of the world's biodiversity – animal insect and plant life. The latter is particularly important. As Professor Norman Myers points out in his article written specially for the guide, one in four of the drugs we buy across the counter of our local pharmacy, has its origins in tropical forest plants. The possibility of discovering cures for the diseases which scourge the world today - HIV/AIDS, cancer, Multiple Sclerosis, Alzheimer's - in such tropical forest plants, is very real.

What a shame if that possibility were lost to humanity through illegal and unsustainable logging of tropical timber - some of which goes to put doors and windows in our houses, make attractive shopfronts and furnish our bars.

The Good Wood Policy Guide suggests a practical but relatively simple solution to the threat facing the world's tropical forests - a solution driven by the purchasers rather than the suppliers of hardwoods. **Demand that the hardwoods you specify and purchase, are certified as coming from sustainably managed forests.** A simple idea but not so easy to carry out in an industry which spans the world and sources its timber from some of its remotest corners - a world where the quest for profit can lead to deception and misrepresentation.

Just Forests, an independent, non government organization with no axe to grind, no vested interest, since its foundation in 1989 has been following developments in the industry. The Good Wood Guide that we are launching here today recommends the certification provided by the Forestry Stewardship Council as meeting all the criteria of a reliable scheme. I support this recommendation and urge you when specifying or using this beautiful natural product, to ensure that you are contributing to the maintenance of the world's tropical forests rather than to their destruction.

We are the custodians of our forests and we have a moral responsibility to pass them on to future generations in a much improved and environmentally enhanced form. Naturally, the better our forests are managed here in Ireland and the more timber we produce, the less the demand for imports from the environmentally more sensitive and challenged regions of our world.

Sadly, we in Ireland for a combination of human settlement and historic reasons know only too well the phenomenon of deforestation as a result of which we are the least forested country in the European Union, despite a high level of tree planting. The Government's Forestry Service is tasked with the responsibility of developing our forestry stock to a scale and in a manner which maximises its contribution to national economic and social well being on a sustainable basis and which is compatible with the protection of the environment. As part of our strategy, we are accelerating our own rate of reforestation in Ireland to bring us from the very low base we have today of 9% of the total land area to the target of 17% by the year 2030.

As an Offaly man I am particularly proud that Offaly County Council is the first local authority in Ireland to have formally adopted a Timber Purchasing Policy that will use timber and wood products sourced by the Council and established as coming from well-managed sustainable sources. I echo the comments of the County Manager when he says that he believes that Offaly County Council are leading by example in the sustainable development of forests both at home and abroad. Clearly what happens at the local level can and does impact on the global level.

In conclusion, I'd like to say a particular word of thanks to Just Forests and all those who have worked to prepare this policy guide. Just Forests Chairperson, Mary Humphreys and Just Forests founder and director, Tom Roche can be justifiably proud of the role they have played in its publication but even more so because of the positive impact I believe it can and will have on developing a more responsible national approach to the use of timber and wood imported into Ireland

mingwoo2



The Taoiseach, Mr. Brian Cowen, T.D., (as Minister for Foreign Affairs), launches Just Forests Good Wood Policy Guide in the offices of the Royal Institute of the Architects in Ireland (RIAI), Merrion Square, Dublin.

L to R: Tom Roche, Founder/Coordinator Just Forests; Jack Keyes, County Manager, Monaghan Co Council, (former Director of Services Offaly Co Council); and Tom Arnold, Chief Executive, Concern Worldwide.



The Taoiseach, Mr. Brian Cowen, T.D., (as Minister for Foreign Affairs), launches Just Forests Good Wood Policy Guide in the offices of the Royal Institute of the Architects in Ireland (RIAI), Merrion Square, Dublin.

L to R: Toal O'Muire, President, Royal Institute of the Architects in Ireland (RIAI), An Taoiseach, Brian Cowen, Tom Farrell, board member, Just Forests, Siobhan Farrell, Architect.



The Taoiseach, Mr. Brian Cowen, T.D., (as Minister for Foreign Affairs), launches Just Forests Good Wood Policy Guide in the offices of the Royal Institute of the Architects in Ireland (RIAI), Merrion Square, Dublin.

L to R: Mary Humphreys, Chairperson, Just Forests; Tom Roche, Just Forests; An Taoiseach, Brian Cowen, Fergal Mulloy, Board Member, Just Forests; Chris Elliott, World Wide Fund for Nature (WWF)..



The Taoiseach, Mr. Brian Cowen, T.D., (as Minister for Foreign Affairs), launches Just Forests Good Wood Policy Guide in the offices of the Royal Institute of the Architects in Ireland (RIAI), Merrion Square, Dublin.

The educational resource board for responsible timber sourcing at only €199



presentation may vary

Do you like the traditional hands-on tactile approach to learning about wood or do you prefer the power and sophistication of multimedia technology on CD-Rom? Well we have combined both aspects in this award-winning wood education project.

As part of our organisation's philosophy, Just Forests promotes the creation of a "wood culture" here in Ireland. With the Know-Wood™ Board you can examine the tactile qualities of the wood and access helpful technical information relating to that particular species on the accompanying CD-Rom. The Wood Explorer CD is your guide to the exploration of 1,650 wood species from all corners of the world. Over eight fields of information helps you to compare species for colour/texture, environmental profile, availability and certification status.

The board consists of 6 Irish-grown hardwoods; 6 Irish-grown softwoods; 3 Irish-made sheet materials and 3 FSC-certified tropical species. It is an attractive and easy way to further your knowledge on wood.

The Know-Wood™ Board will be a great aide to architects, woodwork teachers, and anyone who specifies wood as part of their work.

SPONSOR A BOARD

Ensuring there is a Know Wood™ Board in every school/classroom is a great way of helping the next generation to realise the importance of forests and wood to society. Make sure your child has access to environmental education that will help shape their future. Companies can sponsor a Know Wood™ Board for a local school and have their company logo mounted on the board. For prices and further information please contact: Just Forests, Bury Quay, Tullamore, Co. Offaly.

Tel: 0506 23557 Fax: 0506 25297
Email: knowwood@justforests.org



*Overall winner of the 'Education & Awareness in Forestry' section of the Royal Dublin Society /Forest Service Forestry Awards 1999.

Good Wood

P O L I C Y G U I D E



MANAGING SUSTAINABLE
RESOURCES NOW
FOR ALL OUR FUTURES





context FSC is a graphic printing paper made from 75% de-inked fibre and 25% FSC endorsed pulp.
ID: FSC-UK-0621 FSC Trademark
© 1996 Forest Stewardship Council A.C.



paperback

tel: 011 44 20 8980 2233

MARCH 1991

“Modern industrial society is a fanatical religion. We are demolishing, poisoning, destroying all life-systems on the planet. We are signing IOU’s our children will not be able to pay...we are acting as if we are the last generation on the planet. Without a radical change in least, in mind, in vision, the earth will end up like Venus, charred and dead.”

Jose Antonio Lutzenberger - Former Brazilian Minister for the Environment responsible for the Amazon Rain Forest (London Sunday Times March 1991)

6 DECEMBER 2001

Amsterdam/Brazil - Today Greenpeace welcomed the unprecedented Decree by the Brazilian government to suspend all mahogany forest management plans in the Amazon and take measures to protect Indian Lands and conservation areas.

The decision, announced by the President of the Brazilian environmental agency Ibama, Hamilton Casara, comes in the wake of a series of Greenpeace exposés on illegal mahogany logging and trade in the Amazon.

(<http://www.greenpeace.org/pressreleases/forests/2001dec6.html>)

DEDICATION

At the 1992 Earth Summit in Rio, the international community adopted Agenda 21, an unprecedented global plan of action for sustainable development. The Summit also agreed on the Rio Declaration on Environment and Development, a set of principles defining the rights and obligations of nations, and on a Statement of Forest Principles to guide more sustainable management of the world’s forests.

Later this year, in South Africa at the Johannesburg Summit 2002—the World Summit on Sustainable Development—tens of thousands of participants, including heads of State and Government, national delegates and leaders from non-governmental organizations (ngos), businesses and other major groups will again focus the world’s attention on actions to achieve sustainable development.

But as we all know the best policies are only as good as their implementation. The Johannesburg Summit presents an important opportunity for today’s leaders to adopt concrete steps and identify quantifiable targets for better forest management and implementation of Agenda 21.

This publication is dedicated to all people everywhere who are preparing for the Johannesburg Summit 2002. May they be guided to work together to produce holistic solutions to today’s myriad complex social, environmental and economic problems.



Mary Humphreys,
Chairperson,
Just Forests
Tullamore, Ireland
July 2002



Foreword



Tom Roche,
Founder and Director,
Just Forests.

The world's six billion people are using more of the earth's resources than ever before according to a new report by the United Nations Population Fund (UNFPA), and unless significant action is taken, the damage to the environment will increase as the world's population continues to grow.

The decisions we make today are important. When it comes to 'sustainable' development, our decisions must withstand the test of generations to come. For those who care about the environment and are fascinated by the biological diversity of life, respect the rights of indigenous people and want to leave the legacy of good forest management, then hopefully you will be empowered by this publication.

Wood is a renewable, biodegradable, energy efficient, recyclable and in most cases non-toxic natural raw material. The positive environmental credentials of wood are way ahead of any other building material used in the construction industry. But the epidemic of over-production and over-consumption in the industrialised countries of the west often ignores the great needs of communities in developing countries. Promoting responsible consumption and production patterns to reduce waste in forest products and generate fair trade between north and south ought to be pursued without delay.

The environmental decline, species loss and resulting poverty that bad forest management brings, degrades not only those that suffer its effects first-hand but also those that tolerate it.

You will see from charts on pages 12-13 that people have been busy. We must now stop and ask ourselves why is it that after all those years of developing forest conservation initiatives, costing millions of euros, forests enjoy less protection today than ever before. Part of the answer must be in UNDP executive director Chris Topher's statement on page 12, which states that, "...political will is needed." Yes indeed, political will coupled with commercial accountability is urgently needed if; ... illegal activities and corruption in the forest sector, which was considered a taboo subject until recently ..." (FAO-State of the World's Forests Report 2001) is to be a thing of the past. However, we should not expect our politicians or indeed industry to solve the problems without some coaxing. In our role as woodworkers, timber specifiers, traders and wood consumers we all have a part to play, we can no longer turn a blind eye or bury our heads in the sand and "leave it to somebody else".

Just Forests and the World Wide Fund for Nature (WWF-UK) jointly hosted the first public information meeting on independent forest certification and timber labelling in Ireland, at Dowdstown House, Navan, on 22nd November 1996. Sixty-five people representing the forest/timber industry, timber importers, social, environmental and government groups attended. Since then progress in the management of Irish forests has been noticeable. During 2001, an important milestone in Irish forest management was reached when Coillte –the State Forestry Company, achieved FSC-certification for their forests. A number of Irish timber sawmill companies have also obtained chain-of-custody certification, enabling them to export timber to their discerning customers in the U.K. But much more needs to be done. Irish timber importers need to start stocking and offering FSC-certified timber to their customers.

The Good-Wood Policy Guide shows how you can make a difference to the world's forests and their inhabitants. Every one of us, through the simple daily act of consumer-choice, can be a catalyst for change. We can start by insisting on, and accepting only, timber and wood products from responsibly managed, independently certified forests. In the case of those working with and specifying timber and wood products, adopting the policies on timber recommended in this publication will lead to positive action to help conserve the world's precious forest resource and the many life forms that depend on them. Just Forests is always available to help you in your efforts.

Contents

	PAGE
OVERVIEW	
The Future of the World's Forests	7
The World's Forests: What they mean to us	8-9
What on Earth have we done to protect our forests?	11-13
Worlds apart	15
The Lost Continent – Africa's Shrinking Forests	16-19
Where do we get our wood from?	20-21
POLICY	
A way to protect our world's remaining forests	22-23
A Policy for Everyone	24
A Timber Policy for Specifiers and Purchasers	25
A role for Local Authorities	26-27
A role for Industry	28
A role for Architects, Engineers & Quantity Surveyors	29
ACTION	
Lesser-known timber species	32
Checklist	33
What schools can do	34-35
Forest certification systems	36-37
The global forest and trade network	38-39
List of FSC-timber suppliers	40
Guidance notes for contractors	41
Acknowledgements	42



Coillte's Forests Have Reached New Heights.

In the summer of 2001 Coillte received Forest Stewardship Council certification.

FSC certification is more than a pat on the back. It's international recognition that Coillte's forests are well managed to meet strict environmental, social and economic standards.

So, if you are our customer, our neighbour or one of the millions of people who visit Coillte's forests every year, you can be sure that we are caring for this vital national resource for this generation and generations to come.

Ask for FSC certified wood from Coillte's forests - the responsible choice.

coillte

Business. Nature. People.



FSC accredited certification means that the forest is managed according to strict environmental, social and economic standards. SGS - FM/COC - 0706 FSC Trademark ©1996 Forest Stewardship Council A.C.

For more information visit www.coillte.ie.

The future of the world's forests

Every 2 years the Food and Agricultural Organization of the United Nations (FAO) publishes an overview of the state of the world's forests. At the moment the year 2001 report is available, and it makes sobering reading. Between 1990 and 2000 over 150 million hectares of natural tropical forest (an area three times the size of France) was deforested. Throughout the decade, the loss of natural forests continued at a high rate, although there are now some indications of a slowdown. Deforestation is much less of an issue in temperate forests, but the quality of these forests is very uneven. In many areas plantations have replaced natural forests and protected area networks are inadequate for biodiversity conservation.

Despite this sombre global picture there are signs of hope everywhere. Innovative solutions to conserve forests while providing much-needed income to local communities are being developed around the world from joint forest management in India to extractive reserves in the Amazon. The last decade also saw the birth of certification, a market-based instrument intended to provide an incentive for improved forest management. Today almost 25 million hectares of forests (an area about the size of the UK) around the world have been certified under the auspices of the Forest Stewardship Council, the leading certification system. This is only a fraction of the 600-800 million hectares that are under management for timber production, but it is an encouraging start. Certification is only one of the tools at our disposal to encourage improved forest management. However, it is a relevant and powerful tool. If you are an architect, representative of a local authority, woodworker, joiner, retailer, timber trader or individual consumer you can make a contribution to conserving the world's forests by asking for FSC-certified products.



Dr. Chris Elliott
Director,
Forests For Life,
WWF International,
Switzerland



"How could you not afford to save the forests in light of all that has been ultimately and irretrievably lost?"

Wild species and their genetic resources also support our meal tables. Numerous crops--ranging from foods such as avocado, banana, cashew, coconut, grapefruit and lemon to beverages and spices such as cacao, cinnamon, coffee, paprika and vanilla--depend for much of their productivity, disease resistance, etc., on genetic infusions from wild relatives in tropical forests. Just the exports of these crops are worth well over \$20 billion a year. Think of that the next time you settle down to a breakfast grapefruit, an avocado salad or a cup of best coffee.

The biggest calculation remains unassessed. If, within less than a century, the Earth is bereft of many of its forests, how shall we respond to those of our descendants who ask how we could afford to watch the terminal reduction of what has been the predominant type of vegetation on the Earth for hundreds of millions of years? Will they not rather ask, "How could you not afford to save the forests in light of all that has been ultimately and irretrievably lost?" Let's remember that forests are the most exuberant expression of nature to grace the face of the planet since the first flickerings of life almost four billion years ago.

Many forest animals assist our material welfare. The most numerous forest species by a long way are insects. One might suppose that if we are losing perhaps 50 insect species in tropical forests every day, it hardly matters: what have creepy-crawlies done for us? But consider the oil-palm plantations of Peninsular Malaysia. Until 1980, pollination of the palm trees was undertaken by human hand, an inefficient and expensive process. The plantation owners asked them selves how the palm got itself pollinated in its native habitats of Cameroon's forests. It turned out the task was performed by a tiny weevil. The plantation owners brought back a stock of weevils to Malaysia for release into the plantations, where they performed admirably, with savings reckoned at \$120 million in 1981 and several times as much today. We can thank that weevil next time we utilise margarine and cosmetics that may well be based on palm oil.

This, then, is what is at stake through the Good-Wood Policy Guide. May it enjoy the best of support from Irish architects, local authorities, timber traders, joineries, woodwork experts, and all others who enjoy the myriad contributions of forests. "All others": does that not mean each and every one of us?

For more on the above, see N. Myers, 1992, "The Primary Source: Tropical Forests and Our Future", W.W. Norton, New York and London, paperback £9.50. Also the Forest Stewardship Council at www.fsc.org (of which Just Forests is one of six Irish members--there are nearly 500 worldwide), which enables producers who practice sustainable management to reach consumers wanting to support environmental principles.

Norman Myers is an independent scientist and a Fellow of Oxford University, England. He has been getting his boots muddy in forests since the mid-1970s, when he travelled to Borneo and felt his ecologist's life was just beginning.

The worlds forests: What they mean to us

By: Norman Myers



We--meaning everybody on Earth--depend for our daily welfare on the Earth's forests--meaning forests everywhere. Little though they may realise it, people in Ireland benefit from those hundreds of billions of trees in Amazonia, Borneo, Canada and Siberia. Yet within the lifetimes of many readers of this article, we may witness the virtual demise of many of these forests, together with animal and plant species in greater numbers than in all the rest of the planet put together. That is a business-as-usual scenario. It need not be so. We can change it into a business-as-unusual scenario through e.g. the efforts of Just Forests and their commercial colleagues.

what is it we gain every day?

Consider that when we visit our neighbourhood chemist, there is one chance in four that our purchase--whether a drug, medicinal or pharmaceutical--owes its manufacture to startpoint materials from tropical forest plants. These products include antibiotics, antivirals, analgesics, tranquillisers, diuretics and laxatives among many other items. The contraceptive pill has been based upon forest plant materials from Mexico and West Africa. Commercial sales of these diverse products are worth \$50 billion a year, while their economic value, in terms of e.g. worker productivity maintained instead of lost through sickness, is at least twice as large.

to cite a specific instance

The rosy periwinkle from Madagascar's forests has supplied alkaloids that form the basis of two potent therapies against blood cancers, with economic benefits worth at least \$5 billion per year. Tropical forests are reckoned to contain another dozen plant species with capacity to generate superstar drugs against other forms of cancer, provided the plants can be identified by the scientist before they lose their habitats to the chainsaw man.

Just Forests are most grateful to Prof. Myers for contributing this article especially for the Good-Wood Policy Guide.





Meet some of Ireland's best timber-frame house builders...

Wild Ireland has been delivering exciting and informative features on Ireland's wildlife and environment for over three years. *Wild Ireland* magazine is the only place to find features and articles about Irish wildlife, environmental issues and a host of other information, all presented in a readily accessible full-colour format with the best in Irish wildlife photography. Subscribe now and keep up to date. See below for details, and visit www.wildireland.ie for more news and information.

...in *Wild Ireland* - Ireland's wildlife and environmental magazine

SUBSCRIBE NOW - FROM JUST €22.85 PER YEAR

Name: Telephone:

Address:
.....

Ireland & Northern Ireland 22.85 / STG€17 Great Britain €25.40 / STG€20 CHEQUE/PO made payable to Wild Ireland

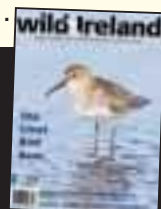
CREDIT/DEBIT CARD. Please tick: Visa Mastercard Amex Laser

Expiry Date: Card No.:

Signature: Date:

No stamp required! Send your completed form to:
Wild Ireland Magazine, FREEPOST, Leinster Mills, Naas, Co. Kildare, Ireland.
Tel: +353 (0)45 894900 • Fax: +353 (0)45 894905 • Email: info.wildireland.ie

Back
Issues
Available



WHAT ON EARTH HAVE WE DONE TO PROTECT OUR FORESTS?



An overview of forest-related initiatives and processes developed over the years to protect forests

This year of 2002, is the tenth anniversary of the United Nations Conference on Environment and Development (UNCED), it is an opportune moment to take a look at initiatives and processes developed over the years to protect forests.

UNCED sparked a decade of change, characterized by new thinking and fresh approaches to forest management, as well as questioning as to what its objectives should be and who the beneficiaries should be. A vision of sustainable forest management emerged. Commitment was strengthened and innovative alliances forged with the aim of achieving common goals in forestry.

Over the past ten years, the sector has moved in two seemingly opposite directions simultaneously. These were "localization", on the one hand, and "globalization", on the other. At the national level, forest planning processes, policies, legislation and field programmes have taken on new emphases, including increased decentralization and participation. Internationally, it has been a time of intense debate, with discussions over the past five years resulting in agreement on several proposals for action, including - very recently - the establishment of an international arrangement to promote the sustainable management, conservation and development of all types of forest, to strengthen long-term political commitment and to promote the implementation of the proposals for action.

"REAL POLITICAL COMMITMENT ON FORESTS ACROSS THE GLOBE IS URGENTLY NEEDED."



UNEP Chief expresses concern about deforestation in Africa

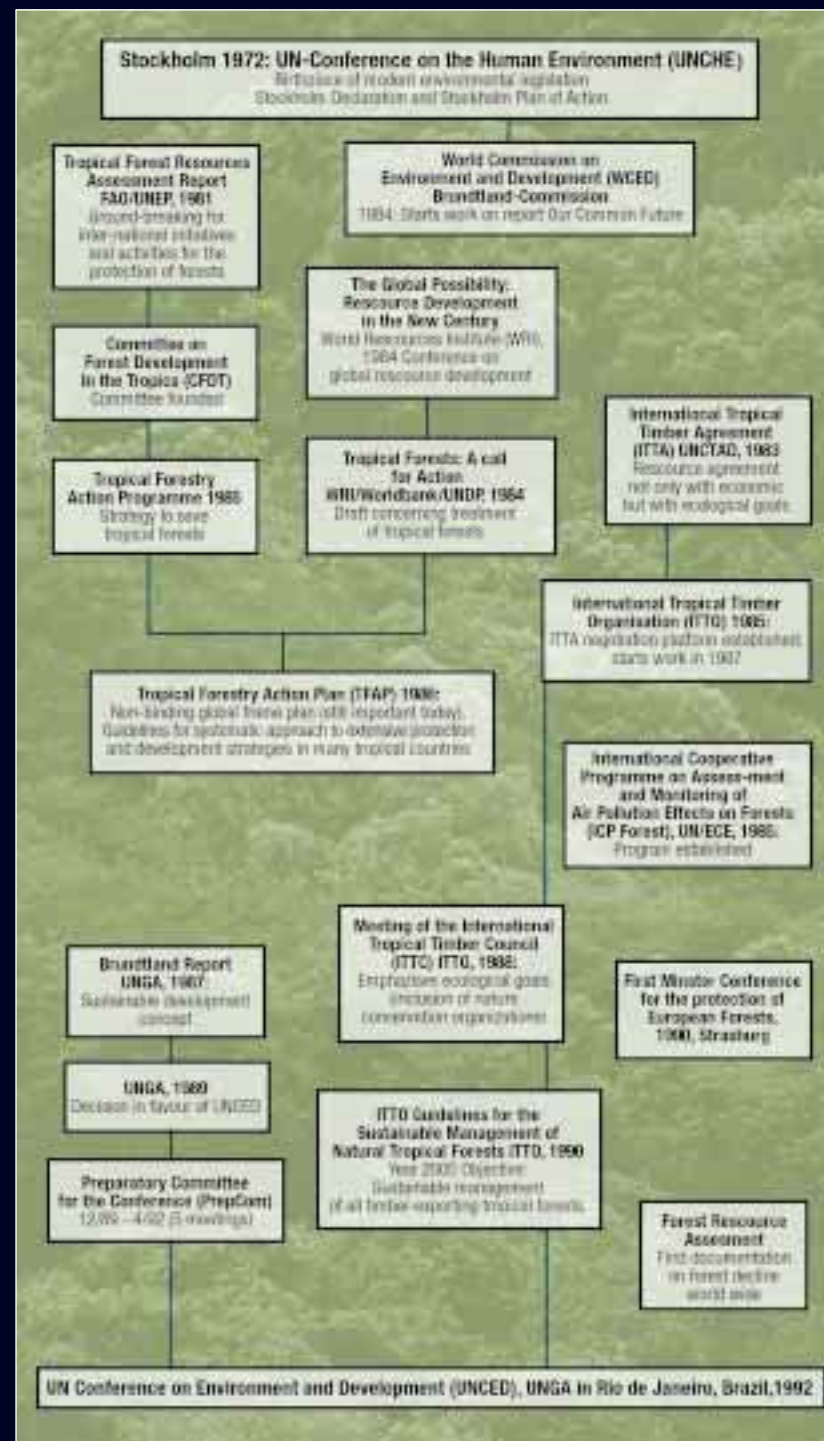
Klaus Toepfer, Executive Director of the United Nations Environment Programme (UNEP)

In recent years the rate of global deforestation has been running at three to four per cent of the earth's forest cover. This is an alarming rate and it must be stopped. The short-term economic gains of clearing woodlands for timber or agriculture must be matched against the even bigger, long-term, losses as a result of uncontrolled and unsustainable deforestation.

UNEP has been involved in initiatives including the Tropical Forest Action Plan, which grew out of the World Forestry Congress in Mexico in 1985; the adoption by nations at the Rio Earth Summit in 1992 of Forestry Principles; the Intergovernmental Panel on Forests (IPF), set up in 1995; the Inter Governmental Forum on Forests (IFF) and more recently, the United Nations Forum on Forests established last summer in New York. UNEP has also been working with regional organizations, such as the African Ministerial Conference on the Environment, to try and help countries manage their forests sustainably. Despite these high-level initiatives, millions of hectares of forest continue to be cleared annually.

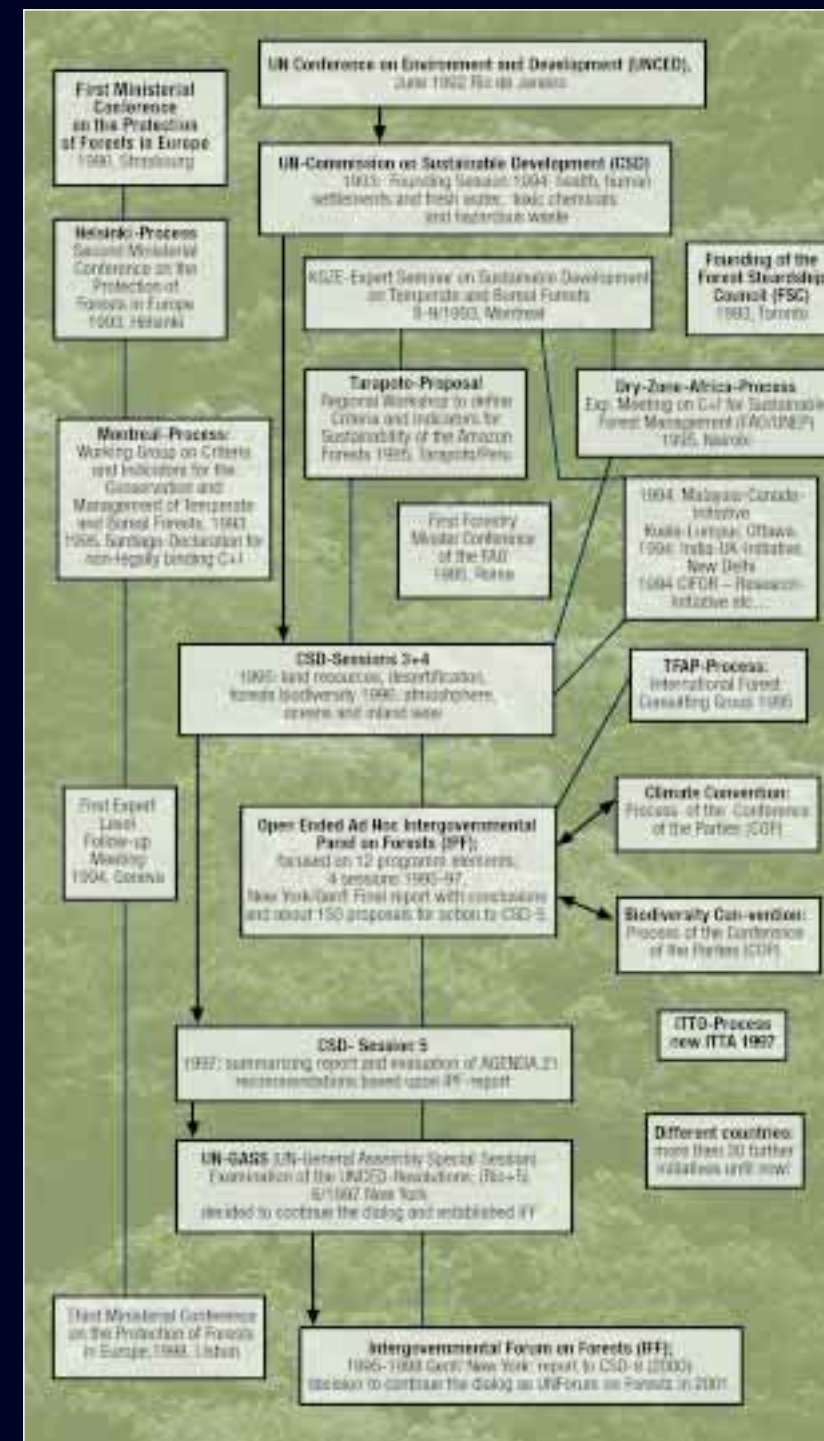
UNEP also believes that real political commitment on forests across the globe is urgently needed so that countries can implement the 150 or so proposals for conserving and managing forests which have been made by the Intergovernmental Panel on Forests (IPF) and the Intergovernmental Forum on Forests (IFF). In many developing countries underlying causes of deforestation includes

BEFORE RIO



"Forest policy is goal-oriented action with the intention of ordering the relations and conflicting interests between society, the forest and forestry for the common good."

AFTER RIO



"Certification schemes, such as the Forest Stewardship Council Scheme pioneered by groups like the World Wide Fund for Nature and which guarantee that timber has come from an environmentally friendly source, also need to be extended".

poverty and booming populations which forces farmers to clear trees for food. Many developing nations also have high levels of debt which are forcing them to fell trees for export to earn foreign currency. Certification schemes, such as the Forest Stewardship Council Scheme pioneered by groups like the World Wide Fund for Nature and which guarantee that timber has come from an environmentally friendly source, also need to be extended.

UPDATE JANUARY 2002

UNEP/Ireland Aid Trust Fund Agreement Launched.

On 31 January 2002, Dr. Klaus Toepfer, signed an agreement with Ireland Aid (the Irish Government's Official Overseas Development Agency) to set up a dedicated Trust Fund which will be used to support UNEP's important environmental work. Ireland Aid will provide 1 million euros for the Trust Fund, which will be used to help Ireland Aid's priority countries in Africa.

UNEP key areas of work include environmental monitoring and assessment, early warning of environmental changes, environmental conventions covering such areas as climate change, biodiversity, as well as environmental support to Africa.

JOHANNESBURG 2002?

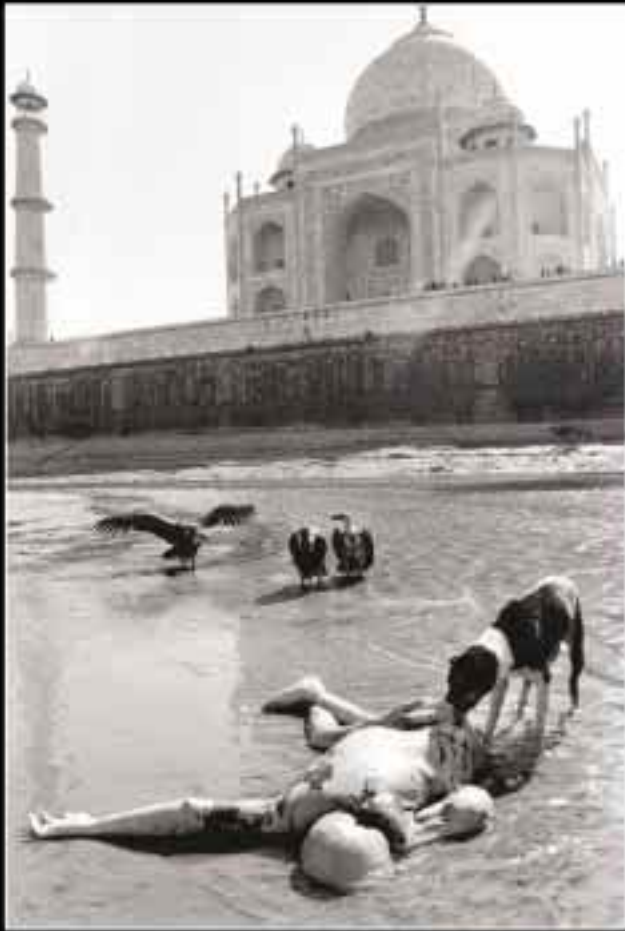
The Johannesburg Summit will review progress ten years on from the 1992 Rio Earth Summit, and will bring together Heads of State and Government, national delegates and leaders from non-governmental organizations (NGOs), businesses and other major groups. The summit will focus the world's attention and direct action toward meeting urgent environmental challenges, including the conservation of natural resources in a world that is growing in population, with ever-increasing demands for food, water, shelter, sanitation, energy, health services and economic security.



Concern programmes in Africa and Asia support poor people in sustainable community forestry

Concern has supported Just Forests since its inception
and we wish them every success with their Good-Wood Policy Guide





No wood...no funeral



The Food and Agriculture Organisation of the United Nations (FAO) estimates that almost 3 billion people depend on wood as their main source of energy.

This is particularly true in poor, rural areas where alternative sources of energy

such as electricity or fossil fuels are either inaccessible or unaffordable.

Fuelwood and charcoal account for just over half of global wood production.

Roughly 90% of the 1.8 billion cubic meters of fuelwood harvested in 1995 was consumed in developing countries. Wood supplies nearly all the energy needs of sub-Saharan Africa. Fuelwood also accounts for 92% of all wood used in South Asia and 73% in Southeast Asia. Research by Population Action International indicates that fuelwood use will remain high even with increases in income and the use of more modern fuels in developing countries.

Worlds Apart



Only yards from one of the world's architectural jewels the decomposing body of an Indian man lies on the beach in sight of the world-famous Taj Mahal - only to become food for marauding dogs and vultures. While 'western' society continues its wasteful consumption habits his family was unable to afford the fuel wood for his funeral pyre.

Youths prepare a bonfire in the Shankhill road area of West Belfast, Northern Ireland, Tuesday July 10, 2001. People across Northern Ireland light bonfires on July 11, to celebrate the 1690 Battle of the Boyne.



The Lost Continent – Africa's Shrinking Forests

In April 2001, a UN panel of experts published a report on the “illegal exploitation” of natural resources and other forms of wealth of the Democratic Republic of the Congo.

The report, stated that exploitation of the mineral and forest resources of the Congo was taking place “at an alarming rate”.

In February 2002, the U.K.-based NGO Global Witness released their report ‘Branching Out – Zimbabwe’s Resource Colonialism in Democratic Republic of Congo’. The report states that, “There have been significant developments, which make the release of an updated report necessary. Firstly, logging has commenced in DRC’s Katanga Province. Secondly, in mid – late 2001 the United Nations Panel of Experts on the Illegal Exploitation of Natural Resources of the Democratic Republic of Congo (DRC), under an extension of their mandate, carried out further investigations and were able to obtain important new details about Zimbabwe’s logging ambitions in the DRC. Since then the political situation in Zimbabwe has seriously deteriorated, very probably increasing President Mugabe’s dependence on the DRC’s natural resources to fund the forces, both political and military, necessary to his political survival. Therefore the logging deal detailed in this report could well become a central plank in Mugabe’s funding of his increasingly despotic regime and corrupt electioneering.”

(‘Branching Out’ is available from globalwitness.org)

THE GROWTH OF THE BUSHMEAT TRADE



Hunting is now considered to be a greater global threat to primates - and the great apes in particular - than the destruction of their habitats.

Jane Goodall, the highly respected primatologist has been working on international forest conservation issues for seven years, suggests that unless urgent action is taken, within 50 years there may be no viable populations of great apes left in the wild.

Other experts predict that pressures are now so great that within 10 to 15 years wildlife densities will be so low (throughout all tropical regions), that finding other sources of protein will be imperative.

In the tropical forests of Africa the annual harvest may well exceed 1 million tonnes per year, much of it

coming through increased access to forests that are being logged.

In Cameroon's capital, Yaoundé, 70 to 90 tonnes of bushmeat were arriving for sale each month. In Gabon, a minimum figure of 500 tonnes of meat is estimated to be sold in Libreville's markets each year.

Just one study in Ouessou, the largest town in northern Congo, found that around 5700 kg of bushmeat is consumed every week.

The impact of over-hunting affects not only the wildlife species but indigenous communities too. The sources of food, medicine and livelihood that forest dwellers depend upon have been severely depleted. Estimates suggest that poachers take roughly ten times more bushmeat than

local subsistence hunters do. Changes in target species have occurred with brush-tailed porcupine, pangolin, forest hog, mongoose and forest antelope all increasingly hunted.

Local Bantu and Baka have broken with tradition and resorted to selling bushmeat as a means to survive.

However, the prime beneficiaries of the bushmeat trade are those selling the meat in urban areas - the price meat can be sold for at market may be as much as five times that paid to the hunter.

The change from subsistence to commercial ventures is illustrated by a CIB logging camp village in northern Congo where bushmeat sales could earn up to 40 per cent of the logging households' daily income.

If logging and other commercial operations are the driving force behind the supply of bushmeat, then rising urban demand for bushmeat has proved a catalyst to the trade.

In urban areas bushmeat demands a premium (as a luxury item) whilst in rural areas prices are lower than for domestic livestock. In Yaoundé, Cameroon, the prices for beef and pork were less than half those for chimpanzee and gorilla.

“It is predicted that, the overwhelming evidence...is of a vastly increasing off-take. Most harvesting is unregulated and unmanaged in an environment to which access is increasingly being facilitated and therefore such harvest appears to be increasingly unsustainable”.

The bushmeat trade is no longer a subsistence occupation, indeed as this report testifies, subsistence hunters are themselves demanding controls on this unsustainable business. Results from a growing

number of studies all converge on one conclusion - that bushmeat hunting at present levels will lead to the extirpation or extinction of most large animal species within the next few decades.

IN CAMEROON,
ILLEGAL LOGGING
HAS ALWAYS BEEN
THE RULE,
RESPECT OF LAWS
THE EXCEPTION

In Cameroon, the World Bank noted such problems need to be remedied and that “the new system of verifiable granting of concessions and ensuring the

implementation of land use plans will make more transparent a process which in the past contained serious abuses.” Yet government plans can all too often be undermined by corporate powers - when the Cameroon Government engaged a Swiss company (SGS) to monitor log exports from public jetties, ruthless companies merely exported from purpose-built private jetties thereby avoiding SGS' scrutiny.

It is no surprise that rumours of bribery and illegal activities abound, for example, one Asian company is said to have arrived in Gabon "with a massive array of lorries and tractors and 'suitcases of money' and seemingly with carte blanche to fell“whilst in Cameroon, illegal logging has always been the rule, respect of laws the exception”.

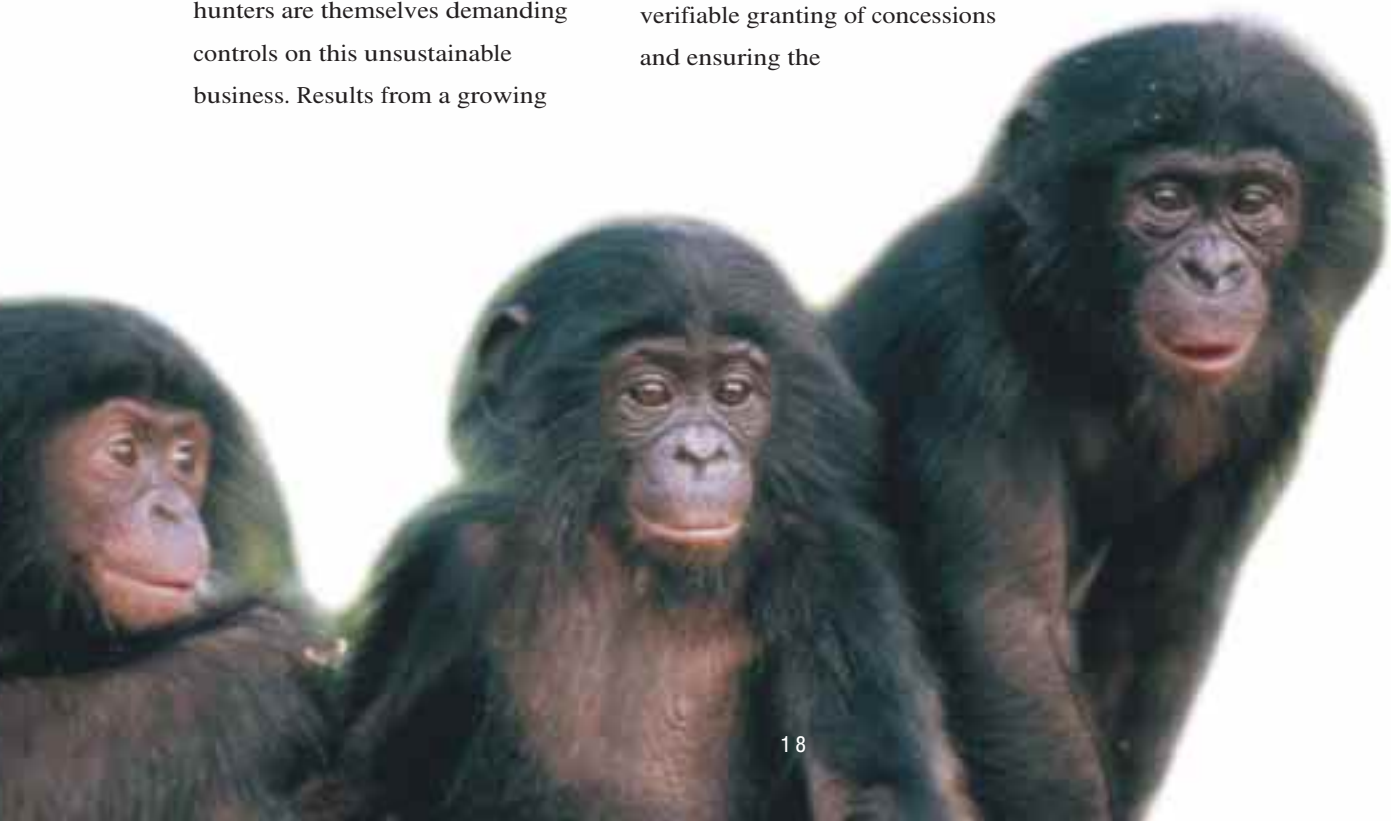


TIMBER PRODUCERS AND THEIR MARKETS

Although total African roundwood production has remained more-or-less stable over the past five years, logging has intensified in certain key areas. Gabon for example had the third fastest increase in log production from 1992-1997 (38 per cent) and ranked fourth among world tropical log exporters in 1997 (roughly 1.5 million cubic metres) whilst Cameroon saw a virtual doubling of timber exports over the four year period, 1992-1996, largely as a result of increasing demand from Asia which imported over 600,000 m in 1997.

PRIMARY FOREST LOST

- Democratic Republic of Congo (DRC) lost 740,000 hectares of forest (an area more than three times the size of Greater London) between 1990 and 1995. Over 80 per cent of the original frontier forest has been lost and less than 1 per cent of the remainder is protected.
- Cameroon has lost over 90 per cent of frontier forest and almost all of the rest is under threat from Asian and European logging companies.
- 70 per cent of Congo's frontier forests are gone and less than 5 per cent is protected.
- Gabon has lost around 70 per cent of frontier forests and timber, oil and mineral exploitation threaten the remainder.
- Equatorial Guinea has already lost all of the large tracts of natural forests. None of the remainder receives any legal protection.
- Central African Republic has lost almost all of its original forests and all of the remainder is under threat despite nominal legal protection of 20%.



WHERE DO WE GET OUR WOOD FROM?



"There is a great absence of hard information on Ireland's wood trade statistics. In fact there has been international criticism on the poor information available on Ireland's constant lateness in producing what are, at best, unreliable."

(Source- Mulloy, F. Chairman European Forest Institute (EFI)-Personal Communication 27/02/2002)

HISTORY

When planning this publication we had intended to show in some detail exactly what the state of play is in relation to Ireland's importation of timber and wood-based products. The Irish Timber Traders Association (ITTA) is the representative body of Ireland's timber traders and timber importers. They represent about 30 companies including the giant Heiton Group plc. When I approached the office secretary I was told that the association "does not have any data relating to any aspect of their members timber imports". Apart from a few passing references in some historical works on forestry, very little is known about how much timber Ireland imports.

There is also a brief passage in 'Growing for the Future' a publication by the Forest Service dated July 1996 which states, "Imports of tropical timber by Ireland (i.e. logs, sawnwood, veneer and plywood) amounted to 70,000 tonnes in 1994, mainly from Ghana and the Ivory Coast, and had a total value of £37 million." At that time it was believed by some observers that 80% of all tropical wood entering Ireland

The following references courtesy of Gordon Knaggs are of interest: "The Irish Woods since Tudor Times"-McCracken, E. 1971. Chapter 10 of "Anatomy of a Siege" - Wiggins, K; Pub. Wordwell, 2000, ISBN 1 869857 37 2, refers to the use of imported timber in mining during the siege of Limerick.

"Irish Country Furniture", Kinmouth, C. Pub. Yale University Press, ISBN 0 300 05574 9 and "Irish Furniture and Woodcraft", Teahan, J. Pub. National Museum of Ireland, ISBN 0 946172 39 0 refer to imports of various woods, particularly mahogany from America.

The earliest reference (for England) for tropical wood is 1661 referring to the use of "Jamaica wood" (Mahogany) for 2 tables and 5 "paire" of stands for Hampton Court. There is also a reference to "Dantzig" oak for panelling in the Mansion House, Dublin, dating back to the 1400's. (Source: Knaggs, G. 2002. Personal communication)

came from Africa and that on average some 25 acres of African forests had to be chopped down every day to meet the tropical wood needs of the Irish furniture and joinery industry.

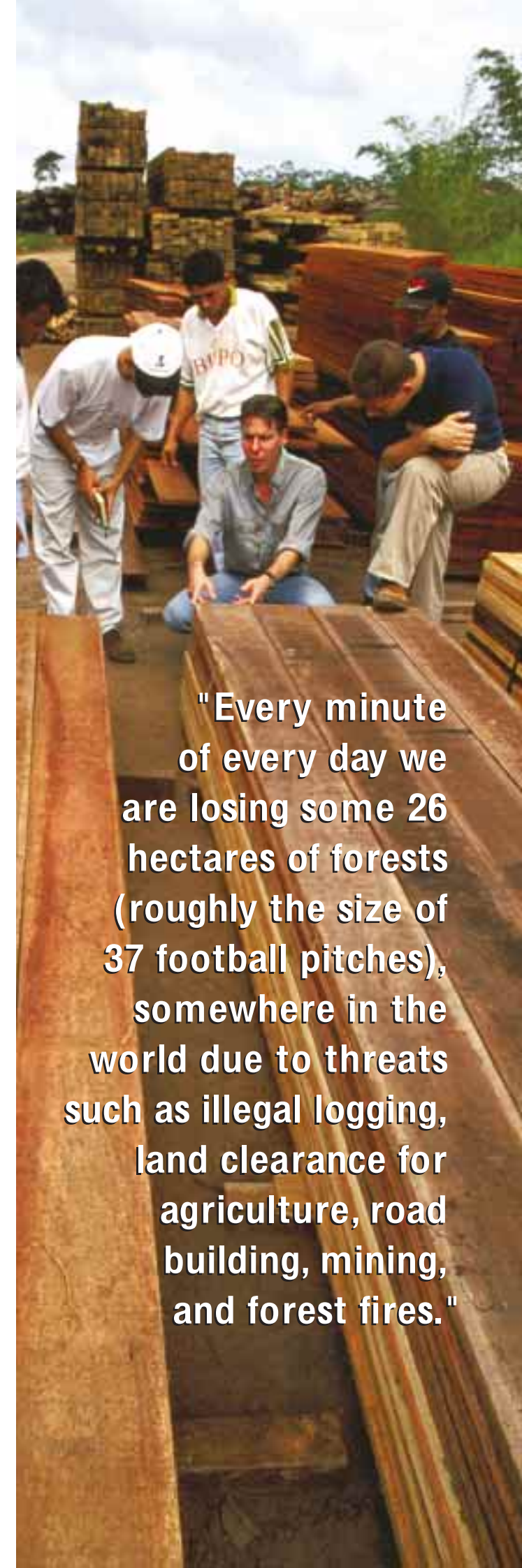
Little is known about timber imports into Ireland. Reliable, easily assimilated data is urgently needed. Although the Central Statistics Office (CSO) does provide some annual trade statistics on timber imports, it is next to impossible to arrive at any clear picture of what exactly Ireland imports.

It is time that some agency such as The National Council for Forest Research & Development (COFORD) took full responsibility for compiling data on Ireland's timber and wood product imports. This information should then be available to all organisations and agencies involved in 'sustainable development' issues.

Ireland imported €133 million worth of tropical timber and wood-based (tropical) products in 2000, up 41.25% from the 1999 figure of €94 million. Eighty per cent of our tropical timber imports comes from west and central Africa. An estimated 30 acres of African forests are chopped down every day to meet the tropical timber needs of the Irish furniture and joinery industry. At the time of writing there was no evidence to show that any of this timber originated from well-managed forests. On the 11th March 2002 all members of the ITTA were faxed a brief questionnaire (5 questions) regarding their environmental/timber policy none replied. If Irish society continues to purchase tropical wood without questioning its origins or environmental and social implications then we are leaving a terrible legacy for future generations. Our children and grandchildren will rightly ask -"why did they stand by and allow the world's natural forests to deteriorate with such loss of biodiversity?"

Irish imports of tropical timber and tropical wood-based products

	1999	2000	%increase over 1999
Tropical Logs	5,084	4,635	- 8.83%
Tropical Sawn Lumber	40,760	48,306	18.51%
Tropical veneers	1,576	1,637	3.87%
Tropical Plywood	17,706	25,238	42.54%
Window Doors & Frames	7,818	12,736	62.91%
Parquet Panels	1,140	2,263	98.51%
Wooden Furniture	17,532	33,329	90.10%
Profiled wood	2,535	4,843	91.05%
Total in million of euro	94,151	132,987	41.25%



"Every minute of every day we are losing some 26 hectares of forests (roughly the size of 37 football pitches), somewhere in the world due to threats such as illegal logging, land clearance for agriculture, road building, mining, and forest fires."



FSC – a way to protect our world's remaining forests

A label for wood – the guarantee for responsible forest management practices

As we have seen elsewhere in this publication International agreements, laws or regulations are not enough to prevent the further destruction of our planet's forests and to protect all animal and vegetal species living in these forests. Faced with the existing problems, environmental organisations decided -at the end of the eighties- to promote a systematic boycott of tropical timber. However, although the boycott drew the attention to the forests destruction problem, it was clear that it could not be considered as a long term solution and could even have unintended effects such as the conversion of forests (now valueless) into farming land and an increased use of alternative products, PVC or aluminium, less ecological than timber. Moreover, by defining tropical timber as "harmful to the environment" and concentrating all the attention on tropical forests, it seemed like if there were no problems related to the management of temperate or boreal forests. On the contrary: it was necessary to develop a constructive method allowing the consumer to distinguish wood from properly managed forests and to encourage



forest owners in their efforts to implement good management practices. This is how the concept of forest certification and wood labelling was created as a tool to promote responsible forest management practices.

WHAT IS FSC?

The Forest Stewardship Council, (FSC), was founded in 1993 by forest owners, timber industries, social groups and environmental organisations as a global, independent, non-governmental, non-profit organisation. The

objective of the FSC is to promote environmentally responsible, socially beneficial and economically viable forest management worldwide.

FSC is a membership organisation. Any forest owner, timber industry, labour union, environmental organisation, indigenous peoples' group or individual may become a member of the FSC and guide its development.

The members of the FSC have developed 10 international principles and criteria for certification of good forest management. National FSC working groups adapt these principles and criteria to the specific conditions of the

respective country. In many regions of Europe only minor adaptations of forest management are necessary to fulfil the requirements for an FSC certificate. The structure of FSC respects the fundamental principles of Agenda 21, such as the balanced representation of economic, environmental and social interests and competence. Thus its +/- 490 members are divided into 3 chambers representing social, environmental and commercial interests, each of which disposes of the same number of votes. Each chamber consists of 2 sub-chambers (one for the northern and one for the southern regions) in order to consider the interests of the developing countries. Again both sub-chambers have the same number of votes.

FROM THE FOREST TO THE CONSUMER: THE "CHAIN-OF-CUSTODY"

In order to guarantee to the consumer that the wood purchased really comes from a well-managed forest, FSC has designed a system - called chain of custody - that tracks the timber from the certified forest through all the steps of the production process until it reaches the end user. Only when this tracking has been independently verified by a certification body, the product is eligible to carry the FSC logo.

COMPLIANCE WITH LAWS AND FSC PRINCIPLES

Forest management shall respect all applicable laws of the country in which they occur, and international treaties and agreements to which the country is a signatory, and comply with all FSC Principles and Criteria.

TENURE AND USE RIGHTS AND RESPONSIBILITIES

Long-term tenure and use rights to the land and forest resources shall be clearly defined, documented and legally established.

INDIGENOUS PEOPLES' RIGHTS

The legal and customary rights of indigenous peoples to own, use and manage their lands, territories, and resources shall be recognized and respected.

COMMUNITY RELATIONS AND WORKER'S RIGHTS

Forest management operations shall maintain or enhance the long-term social and economic well-being of forest workers and local communities.

BENEFITS FROM THE FOREST

Forest management operations shall encourage the efficient use of the forest's multiple products and services to ensure economic viability and a wide range of environmental and social benefits.

ENVIRONMENTAL IMPACT

Forest management shall conserve biological diversity and its associated values, water resources, soils, and unique and fragile ecosystems and landscapes, and, by so doing, maintain the ecological functions and the integrity of the forest.

MANAGEMENT PLAN

A management plan - appropriate to the scale and intensity of the operations - shall be written, implemented, and kept up to date. The long term objectives of management, and the means of achieving them, shall be clearly stated.

MONITORING AND ASSESSMENT

Monitoring shall be conducted - appropriate to the scale and intensity of forest management - to assess the condition of the forest, yields of forest products, chain of custody, management activities and their social and environmental impacts.

MAINTENANCE OF HIGH CONSERVATION VALUE FORESTS

Management activities in high conservation value forests shall maintain or enhance the attributes which define such forests. Decisions regarding high conservation value forests shall always be considered in the context of a precautionary approach.

PLANTATIONS

Plantations shall be planned and managed in accordance with Principles and Criteria 1 - 9, and Principle 10 and its Criteria. While plantations can provide an array of social and economic benefits, and can contribute to satisfying the world's needs for forest products, they should complement the management of, reduce pressures on, and promote the restoration and conservation of natural forests.



Brian Cowan
Minister for Foreign Affairs

“ Slightly more than half of the world’s forests are located in developing countries. The loss of such rich and irreplaceable natural resources can greatly reduce the development options of the countries concerned and their prospects of achieving sustainable development. This will be an important issue at the World Summit on Sustainable Development in South Africa in 2002. I believe that a forest certification scheme like the Forest Stewardship Council is a powerful tool for encouraging responsible forest management. It provides an opportunity for individuals, companies and local authorities to play a role in supporting sustainable development. ”



Toal O’ Muire
President of the Royal Institute of the Architects in Ireland (RIAI)

“ In our work as architects, sustainability requires that we think not just of the present, but also of the future: in our day-to-day decisions, in the expression of our intentions through design, and in our approach to the design of buildings, neighbourhoods and regions. ”

Architects normally see timber in carpentry and joinery works after it has been sawn, machined or even shop-primed, so that its provenance is not self-evident and may be difficult to verify. Within the limitations of their responsibilities, architects should nonetheless specify timbers which come from well-managed forests, such as those certified according to the principles of the Forest Stewardship Council (FSC). Architects should seek to raise awareness of issues of forest management not only among their clients, but also in the building industry. ”

Many organisations are now implementing timber specification policies. Such a policy would ideally cover all projects where timber is specified. Having a policy about timber specification is a good way of ensuring that everyone working on a project is clear about what timber is acceptable for use. Numerous groups involved in the construction industry and the timber trade can adapt the timber policy outlined on the next page.

A Policy for Everyone



Domnall Mac Domhnaill
Managing Director
True Temper Ltd.

“ In today’s environmentally conscious society it makes sound economic sense to know where your raw materials come from. Independent forest certification and timber labelling is good for business as well as the environment. From here on discerning customers are going to demand credible environmental statements on timber products. To date the only scheme to meet the needs of our company is the Forest Stewardship Council (FSC). True Temper Ltd, in Cork, is proud to be the first company in the world to have received FSC certification for our range of garden tools. ”



Niall Sweeney, Manager
Offaly County Council.

“ Offaly County Council are delighted to be the first local authority in Ireland to have formally adopted a timber purchasing policy. This policy was adapted by Offaly County Council in April 2001 and is underpinned by the principle that timber and wood products sourced by the Council will as soon as is practicable, be independently certified, preferably by a certifier accredited by The Forest Stewardship Council (FSC), or equivalent, as coming from well managed sustainable sources. We believe that by promoting this policy, where practicable, in our public works contracts we are leading by example in the sustainable development of forests both home and abroad. ”

A Timber Policy for Specifiers and Purchasers

POLICY

Forest management can be environmentally appropriate and socially beneficial, but it can also be environmentally and socially damaging. This policy recognises the responsibility of this local authority/government department/company/organisation/ [YOUR NAME] as a consumer/specifier of forest products to ensure that we have a neutral if not positive effect on the world’s forests.

We will give preference to timber and timber products that have been independently certified by a credible, globally applicable forest certification scheme and can demonstrate that the products are derived from well managed sources.

The following criteria must be met within the certification scheme: recognition of indigenous peoples rights, long term economic viability, protection of biodiversity, conservation of ancient woodland, long-term responsible management, regular monitoring, chain of custody and a logo or label which can be used on the products originating from forests which have been certified and which provides the guarantee to the final customer.

GUIDELINES

If independently certified timber proves to be unavailable, contractors will, as a second resort only, use timber from a known source, and will attempt to gain as much assurance as possible that the forest is well-managed and will provide documentation of proof. Flexibility in terms of species specification should be pursued. Documentation must be provided to prove that every attempt has been made to obtain independently certified sources before exploring alternatives.

Without group certification schemes, some small businesses may not be able to achieve certification. If they are growing or using local timber they should still be encouraged and given market opportunities. When group certification schemes are available in the area, suppliers should be encouraged to join such schemes.

Persons with responsibility for specifying timber should inform contractors of their organisation’s timber procurement policy. *Guidance should be given to contractors and suppliers as to the background environmental information, which the organisation considers to be the acceptable minimum in order to ensure that its policy is being adhered to.

EXAMPLE:

FOR LOCAL AUTHORITIES, THE FOLLOWING COULD BE USED:

This local authority [NAME OF COUNCIL] will give preference to timber and timber products that have been independently certified by a credible, globally applicable forest certification scheme and can demonstrate that the products are derived from well managed sources.

FOR ARCHITECTS THE FOLLOWING SPECIFICATION CLAUSE CAN BE USED:

All timber used should carry the Forest Stewardship Council (FSC) trademark or other label from an equivalent internationally recognised, globally applicable, independent certification scheme for good forest management.

* Please see Guidance Notes for Contractors on page 41

The Role of Local Authorities in Promoting Good Forest Management



Why should Local Authorities require FSC certified products in tender specifications?

By: Tom Roche

In Ireland, local authorities construct, operate and maintain economic, social and environmental infrastructure, oversee planning processes, establish local environmental policies and regulations, and assist in implementing national and sub-national environmental policies. They are very close to the people and thus play a vital role in educating, mobilizing and responding to the public. In this regard, local authorities - be they big or small - are important players for putting sustainable development into practice. They are important consumers and their public procurement policy is a powerful tool for promoting the use of environmentally friendly products and services. Their behaviour is likely to have an important influence on the people and they should not miss the opportunity to become the role model for their citizens.

LOCAL AGENDA 21:

The influence of local authorities is often underestimated when global problems are raised, though they can play an important role. This was mentioned for the first time during the UNCED conference in Rio de Janeiro (1992) where political leaders, scientists and members of non-governmental associations talked about the world's future. It was thanks to this conference that the concept of "sustainable development" became widely accepted. The proposed actions discussed during the Rio conference were put together in the Agenda 21, a sort of "guidelines" for a sustainable 21st century. Chapter 28 especially proposes initiatives that can be developed by local authorities willing to support the objectives of Agenda 21. Today, local authorities of many countries are implementing a Local Agenda 21.

THE CLIMATE ALLIANCE

The Climate Alliance is a partnership between European local authorities and indigenous rainforest peoples with the goal of protecting the earth's atmosphere. The 900 European member cities work jointly on drawing up and implementing climate protection action plans and cooperate with the indigenous partners to preserve tropical rainforests.

CLIMATE ALLIANCE MANIFESTO

(Bolzano Declaration, 17 May 2000)

Effective climate protection calls for a reduction in all greenhouse emissions, which is the subject of the Kyoto and Montreal Protocols. In the mid-term, we are striving for more rigorous reductions in CO₂ and other greenhouse gases than those agreed by the industrial states. The long-term goal for our cities and towns is a climate-friendly per capita value for greenhouse gas emissions.

We support indigenous rainforest peoples in their endeavours to exercise their basic rights. These include the right to be recognised as peoples with traditional territories, the right to self-determination and the right to live in their natural environment.

We want to contribute to the conservation of tropical forests and their biological diversity within the framework of possibilities for municipal action. This also serves climate protection, which requires both conservation and expansion of biological CO₂ sinks and, at the same time, a reduction in man-made greenhouse gas emissions at source.

The Climate Alliance Manifesto specifies that local authorities should contribute to the conservation of tropical forests and their biological diversity by:

- Abstaining in municipal procurement from tropical timber derived from destructive logging of primary tropical forests; furthermore it is recommended to abstain from timber derived from destructive logging of primary forests in other climatic zones.
- Supporting and implementing other policies and measures for the protection of the rainforests and their biological diversity, which guarantee the rights of the people living in the forests, particularly the indigenous peoples. This includes internationally recognised, verifiable and independent certification

of timber produced by ecologically and socially acceptable forest management systems, and responsible use of other forest products that contribute to the quality of life of the indigenous communities.

LOCAL AUTHORITIES AS CONSUMERS

A responsible procurement policy is a very important tool for local authorities willing to put sustainable development into practise. Local authorities use significant volumes of wood for public works. By choosing FSC certified timber, they contribute to responsible forest management on a worldwide scale and they set a good example to the public.

Please see our recommended policy outlined on page 25. A more specific and detailed policy document outlining the role of council staff, including clear tender specifications and assistance to building contractors and timber suppliers is available from Just Forests.

CHAPTER 28 OF THE RIO EARTH SUMMIT

28.1. Because so many of the problems and solutions being addressed by Agenda 21 have their roots in local activities, the participation and cooperation of local authorities will be a determining factor in fulfilling its objectives. Local authorities construct, operate and maintain economic, social and environmental infrastructure, oversee planning processes, establish local environmental policies and regulations, and assist in implementing national and subnational environmental policies. As the level of governance closest to the people, they play a vital role in educating, mobilizing and responding to the public to promote sustainable development.



Why the timber industry must use certified wood

True Temper Taking a Lead:

True Temper, the Cork based garden tool manufacturers, was the first company in Europe to supply a range of garden tools with Forest Stewardship Council (FSC) certified handles. The customer was B&Q, the leading U.K. DIY multiple with up to 300 DIY stores. They recently opened a warehouse in Dublin.



In 1993 B&Q led a major initiative in the U.K. by insisting that all its suppliers of products with a wood content were required to satisfy B&Q that they knew the exact forest locations of their wood sources and that they could demonstrate that they were "well managed and sustainable". The deadline was 1995 and True Temper satisfied B&Q's conditions. Then B&Q set a deadline of 2000 for all wood in products supplied to them to have the independent certification of the FSC.

In the early nineties B&Q had experienced the concern of consumers about the implications for the world's natural forests of the indiscriminate destruction of natural forests to procure mahogany and other exotic woods for commercial gain. They decided to actively promote independent certification by the FSC. They decided that it was essential to avoid ambiguity and confusion in the consumers' minds by having only one reputable and readily identifiable mark.

While True Temper had been sourcing its ash from well managed and sustainable sources in Germany and Pennsylvania, pragmatic business needs brought True Temper into the independent certification drive. We had to have FSC certification to retain the B&Q business but the education we received in the process was both illuminating and alarming. We learned that 95% of the world's forests were at risk and our enthusiasm for the movement to independent certification grew as a result of our exposure to information about the condition of the world's forests but also we recognised that our company could earn consumer

confidence and support for our products by receiving FSC certification.

In pursuit of our objectives I visited Brazil and Pennsylvania to see what was happening at first hand. I saw some destroyed rain forest terrain near the mouth of the Amazon but I also witnessed an innovative and fascinating forest regenerative programme in Brazil and the natural regeneration in Pennsylvania.

It was from Kane Hardwoods in Pennsylvania that we sourced our first consignment of FSC certified ash in 1998 well ahead of B&Q's deadline of 2000. True Temper's saw mill in Union City, PA, was certified by Smartwood in August 1997 and SGS awarded True Temper in Cork FSC certification for the products supplied to B&Q in June 1998, the chain of custody from growing ash tree to finished garden tool having been established.

The amount of FSC certified ash available is limited and to date we have been restrained by the limitations on supply as we have just enough certified ash to supply B&Q's requirements. But the situation is improving.

The Home Depot, the world's largest DIY retailer, and Lowes in the U.S. have recently announced their commitment to certification so the demand is also growing !

In conjunction with other Irish manufacturers, importers, Just Forests, and Duncan Stewart (the renowned architect and TV broadcaster) we have launched an Irish buyers' group - "The Irish Sustainable Forestry & Timber Initiative" (ISFTI) - dedicated to the promotion of sourcing of independently certified timber by Irish timber importers, and Irish manufacturing, retail, and construction companies, with particular emphasis on FSC certification. The ISFTI is affiliated to the Global Forest & Trade Network which is coordinated by the World Wide Fund for Nature (WWF).

True Temper at Cork is proud to be the first company in the world to have received FSC certification for a range of garden tools. We are fully committed to providing all our products in the long term in FSC certified wood. We are anxious to promote the practice throughout the Irish timber and wood product manufacturing trade.

Forest Conservation

By Duncan Stewart, B.Arch, FRIAI, Dip.Arb Law. Member RIAI.

not just by policy but also by design!

"Soil-erosion leading to desertification will increase on the African continent. Freshwater sources will dry up. Species-rich forest habitats containing medicinal plants with huge potential for cures to society's present-day ills will disappear. Increased instability and unsurity in local, regional and global weather patters will occur."



In my work as an architect and television presenter I have a clear responsibility to be better informed about sustainable development to highlight these important issues to my clients and television audiences, for us and for the benefit of future generations.

Today we are all very much aware of the importance of the world's forests to society. Yet as architects, engineers, quantity surveyors and construction industry workers in Ireland we turn a blind eye and condone destructive logging practices in many tropical regions. The result is an unacceptably high loss of animal and plant life leading to extinction and the annihilation of indigenous peoples cultures. Soil-erosion leading to desertification will increase on the African continent. Freshwater sources will dry up. Species-rich forest habitats containing medicinal plants with huge potential for cures to society's present-day ills will disappear. Increased instability and unsurity in local, regional and global weather patters will occur. In many countries the extraction of commercial timber by transnational logging companies has led to the general degradation of the forest resource base. Once this base has been eroded there follows environmental and social decline resulting in economic misery for many, particularly in developing countries. Locals are often denied access to their own timber resource for building, with the result they end up with poor quality housing.

A Timber Specification Policy

All across Europe our counterparts in France, Germany, The Netherlands and the United Kingdom are influencing how the world's forests will be managed by specifying FSC-certified timber.

Architects, engineers and quantity surveyors urgently need to build responsible timber sourcing into every specification they write regarding wood products. This publication points the way. On page 40 you will see that a number of Irish sawmilling companies now provide FSC-certified timber and wood products including oriented strand board (OSB). Coillte-the Irish Forestry Board also have made great progress by achieving

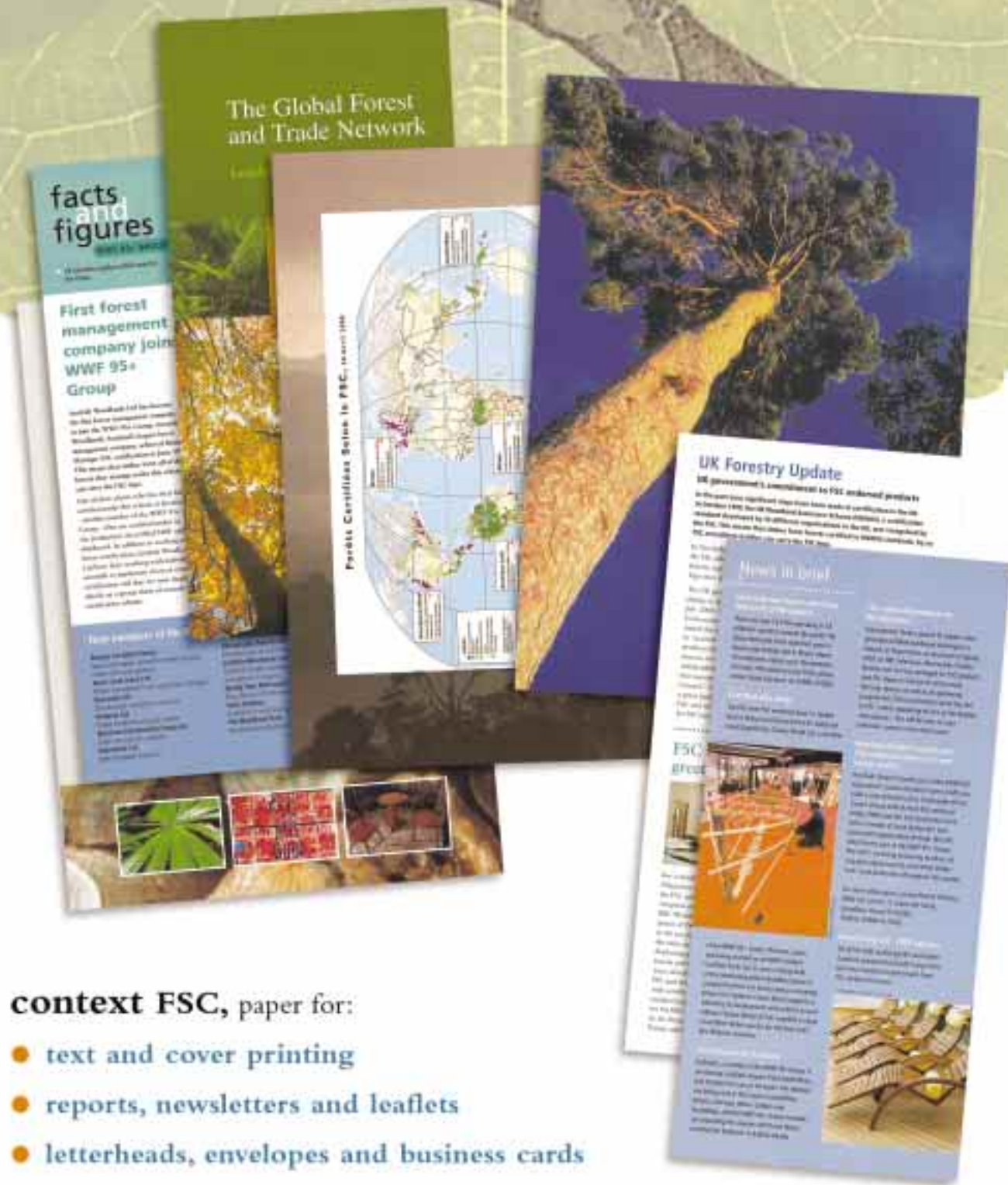
Duncan Stewart is a practicing architect and partner in the architectural firm of Stewart & Sinnott in Dublin. He is an accomplished television programme producer/presenter and managing director of Earth Horizon Productions Ltd. Duncan is a board member of Just Forests.

Ireland has an insatiable appetite for tropical timber, which is used for a wide range of applications from windows and doors to boardwalks, pier work and cladding. We are the largest per-capita consumers of Iroko in the EU. An estimated 50 acres of African forests are chopped down every day to meet the tropical timber needs of the Irish construction industry. A recent report by Global Witness has shown that in excess of 60% of all tropical timber logged in Africa is the result of illegal logging carried out by European logging companies.

As architects we are one of the most powerful influences in Ireland when it comes to specifying timber for construction work and associated trades. We have an important role to play in reversing forest degradation. We urgently need to start to specify timber and wood based products from independently certified forests under the auspices of the Forest Stewardship Council (FSC). Without immediate change in the way timber is extracted from forests, our legacy will be the destruction of the world's richest source of biodiversity. We will have assisted in squandering their unique genetic information and lose their subtle, intricate and irreplaceable beauty. Unless we make changes in our timber specification clause in favour of independently certified timber, we run the risk of compromising our precious air and water resources, which in turn will not only effect us but will devastate the lives of even more people who live in forest-dependant communities around the world.

FSC certification for their forests in 2001. Regrettably, Irish timber importers have not grasped the opportunity to support best forest practice and continue to source their tropical timber stocks from questionable sources. Your insistence on FSC-certified timber in your specifications will help them change. Let's make sure that the legacy we pass on to our children, and future generations, includes a chapter written by our decisions to support responsible forestry. By encouraging and rewarding better forest management practices by our choices of timber, we are helping to nurture the survival of all life forms.

context FSC



context FSC, paper for:

- text and cover printing
- reports, newsletters and leaflets
- letterheads, envelopes and business cards



context FSC is a graphic printing paper made from 75% de-inked fibre and 25% FSC endorsed pulp.
 ID: FSC-UK-0621 FSC Tiadeniark
 © 1996 Forest Stewardship Council A.C.



paperback
 tel: 011 44 20 8980 2233

Sustaining the Forest Resource Through Other Means!

By: Tom Roche



“Every country has three forms of wealth: material, cultural and biological. The first two we understand well because they are the substance of our everyday lives. The essence of the biodiversity problem is that biological wealth is taken much less seriously. This is a major strategic error, one that will be increasingly regretted as time passes. Diversity is a potential source for immense untapped material wealth in a form of food, medicine, and amenities. The fauna and flora are also part of a country's heritage, the product of millions of years of evolution centered on that time and place and hence as much a reason for national concern as the particularities of language and culture.”

(Excerpt from 'The Diversity of Life' by Edward O. Wilson)



What Your School Can Do To Conserve Natural Resources and the Environment

JUST FORESTS MISSION:

To increase society's awareness of the economic, social, cultural and environmental importance of the world's forests. To promote fair trade in forest products between 'developed' and 'developing' countries. To initiate actions to conserve our environmental heritage and natural resources for future generations. To find economically viable solutions to reduce resource consumption, stop pollution and conserve natural habitats.

REMEMBER THAT:

- Forests provide an astonishing array of goods and services crucial to our survival
- Forests are home to millions of people around the world and their only source of energy (fuelwood) for cooking and heating
- Forests are immeasurably rich in animal and plant life that needs protection
- Wood is an important and valuable renewable natural resource for everyone
- It is everyone's responsibility to look after our environment

WHAT YOU CAN DO:

Worldwide demand for paper-the single largest use of wood fibre-has increased fivefold since the 1950s, and is expected to double again over the next 50 years. Develop a policy for your school on what paper and wood is acceptable for use by both pupils and staff. The following suggestions are a starting point. If you need any further assistance in developing a policy Just Forests would be delighted to help.

- Don't waste paper – write on both sides and don't throw away unnecessarily
- Buy recycled paper or 'post consumer waste' paper when possible or you can ask for FSC-certified paper
- Buy recycled copybooks in bulk
- Don't use more paper than you need; e.g. when you visit your local fast-food restaurant and takeaway only take a couple of serviettes and don't litter
- Use washable cloth instead of paper towels for cleaning jobs
- Ask the school board to use FSC-certified timber and wood products in any school refurbishment or reconstruction work
- Ask your parents and teachers to consider the Checklist on page 33 before purchasing timber or wood-based products.

GREAT IRISH TRADITIONS:

Ireland is steeped in musical and sporting tradition. Over the years this country has produced world-class musicians and sports personalities-many of whom depend on wood to carry on their profession. Have you ever considered the role wood has plays in their lives?

For centuries Irish craftsmen and women have been making musical instruments and sporting equipment from wood. Where would we be without these beautiful musical instruments (violins, guitars, flutes, clarinets, ...etc)?

Unfortunately many of the world's best-loved musical instruments are made from precious and rare tropical timbers such as African Blackwood and Rosewood both of which are seriously over-exploited.

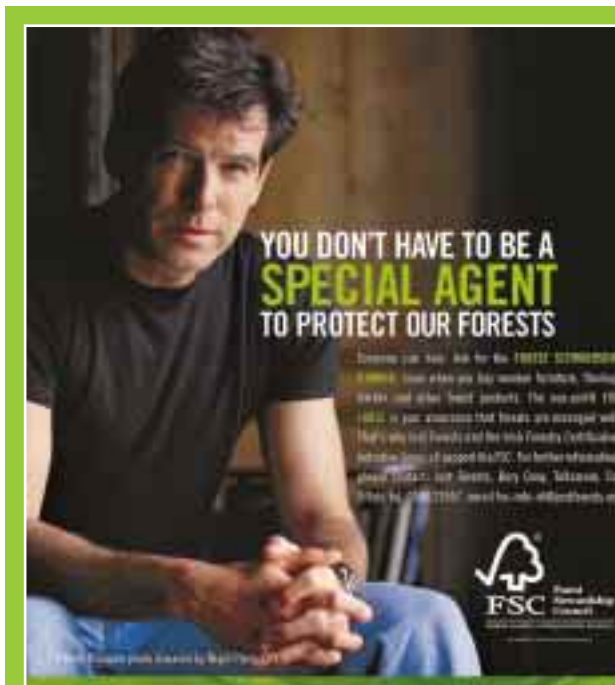
And what would we do without our sports

equipment (hurleys, tennis racquets, hockey sticks....etc). Fortunately we use mostly temperate timbers such as Ash and Hickory for our sports equipment. However, we need to ensure that all wood-temperate and tropical- comes from well-managed forests.

Navan-born actor Pierce Brosnan is a great advocate of responsible forestry. His public support for FSC points the way.

PROJECTS:

- Think about where all our tropical wood comes from (Africa, Asia, South America, etc). What effects does our use of tropical wood have on the lives of children and animals on those continents? Are we trading justly with developing countries? (see pages 16-19 bushmeat)
- Write to your local timber supplier or D.I.Y. store and ask them if they know where their wood and wood-based products comes from (see page 20). Ask them if they supply FSC-certified timber. Explain to them how important it is to get wood from responsibly managed forests. Tell them how this will help to protect forests



"Wood is the mirror of Man - reflecting in countless ways his restless activity, his boundless ingenuity, his aspirations and pastimes; reflecting, too, his changing view of the world about him as he realized, in the nick of time, that this seemingly endless resource is a venerable heritage, demanding his concern and constant attention."

(The International Book of Wood – Published by Mitchell Beazley, London)

from unjust exploitation by unscrupulous logging companies. It will ensure that forest dependant communities in tropical countries get a fair economic return for their natural timber. This will also help protect indigenous peoples rights and cultures and wildlife. Don't forget to tell them that your future and theirs is also dependant on the world's forests (see pages 8-9, 'The Worlds Forests')

- Write to your local furniture store and ask them if they supply FSC-certified furniture and wood accessories. If they don't ask them why not. (see page 36)

- Write to your local authority and ask them if they have a 'Timber Purchasing Policy' (see page 25). If they don't then contact your Public Representative or T.D., and explain to him/her how important it is for your local authority to

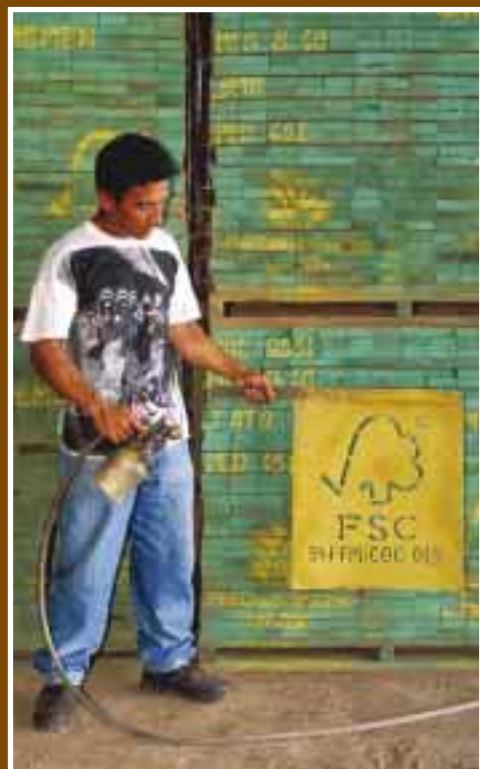
have a policy on timber and wood-based products that promotes good forest management. (see pages 26-27)

- Write to a local business and ask them to sponsor Just Forests award winning hands-on wood education board –The KNOW-WOOD™ Board and CR-ROM for your school (Back cover for more details).



WHY JUST FORESTS BELIEVES FSC IS THE ONLY CREDIBLE FOREST CERTIFICATION SYSTEM AROUND

Three of the world's largest and most active forest conservation organisations have come together to clarify the differences between forest certification programmes. At the end of January 2002, Friends of the Earth EWNI, Greenpeace International and the Worldwide Fund for Nature (WWF) issued the following statement:



Confusion in the market place must be eliminated. Wood consumers must clearly know what is the best system for forest management so they can continue to use wood confidently.

"In the last few years forest certification has become a world wide accepted tool to improve forest management. The debate has now moved from 'why forest certification?' to 'which system is credible?'.

As Europe is the most developed market for certified timber and the biggest producer of certified timber, European companies need to show leadership on this issue. We therefore urge you not to support any forest certification scheme that does not meet minimum credibility criteria.

During most of last year we were repeatedly asked to detail why we did not support some forest certification schemes, the Pan European Forest Certification Scheme (PEFC). The answer is simple. To be credible forest certification must fulfil a number of criteria. It should be independent, transparent, based on equal participation of economic, ecological and social interests, use minimum performance thresholds, and lead to improved forest management.

Several studies have shown that currently only the FSC scheme meets all of the criteria developed by NGOs, governments and industry for a credible forest certification scheme. We therefore state that, at this moment, we can only recommend the Forest Stewardship Council "FSC" certification scheme."



CONFUSION

Since our founding in 1989, Just Forests (then better known as Irish Woodworkers for Africa) has watched closely as the forest industry and the timber trade used numerous means to defend their 'policy' and protect their market-share for their products. This sometimes included false environmental statements and misleading claims regarding the forest management practices employed to the actual source of their timber supplies. When FSC was formed in 1993 Just Forests joined up immediately. We attended numerous international meetings of the newly founded organization and played a small role in developing the structure that today makes FSC the world's most credible forest certification programme. Competing forest certification schemes are causing confusion for the wood consumer and if not checked will damage the good image of wood as an outstanding renewable, 'environmentally-friendly' natural raw material. FERN, the Brussels-based forest monitoring non-governmental organization has produced many position papers on forests. Here we take a brief look at their report on different certification schemes.

DIFFERENT SCHEMES

Forest certification can be an important tool to improve forest management. It is neither a panacea to solve the world's forest crisis, nor can it replace regulations and legislation. However, it can and should complement these tools. The role forest certification can play depends on the strength of the chosen certification system. Certification systems currently in operation are significantly different from each other in terms of procedural and performance requirements. The four largest are: the Forest Stewardship Council (FSC), the Canadian Standards Association (CSA), the Sustainable Forestry Initiative (SFI) and the Pan European Forest Certification Scheme (PEFC).

The FSC is a global programme, the CSA is only applicable in Canada, the SFI is mainly applicable in the US and Canada, and the PEFC provides a framework for national certification schemes in up to 14 European countries. The CSA, PEFC and SFI are certification systems initiated and, in most cases, governed primarily by the forestry industry and forest owners. Although attempts by the forestry industry and forest owners to improve forest management are to be encouraged, we believe that the CSA, the SFI and the PEFC do not fulfil the basic requirements for credible forest certification systems and should not be preferred or promoted by consumers or corporate purchasers.

THE BASIC REQUIREMENTS FOR A CREDIBLE FOREST CERTIFICATION SYSTEM

Certification is a process by which an independent third party gives written assurances that a product, process or service conforms to specified requirements. To be effective, forest certification must:

- Be based on objective, comprehensive, independent and measurable performance-based standards –both environmental and social.
- Be based on equal and balanced participation of a broad range of stakeholders.
- Be based on a labelling system that includes a credible chain of custody.
- Be based on reliable and independent third party assessments and include annual field audits.
- Be fully transparent to the parties involved and the public.

While the PEFC, CSA and SFI incorporate some of the above features, only FSC delivers on every important component of a credible forest management certification system. Consequently, we consider the FSC to be the only available framework that meets the basic requirements outlined above. The FSC is therefore the only credible forest certification system that we can recommend to consumers or promote among forest managers, policy makers and the public.

FSC

- ✓ The FSC has rigorous performance-based criteria covering all aspects of sustainability: ecological, social and economic.
- ✓ The FSC has proper standard setting, certification and accreditation procedures.
- ✓ Economic, social and ecological interest groups hold equal decision-making power.
- ✓ The FSC is the only programme able to certify forests around the world, whatever the size and what ever the tenure system.

PEFC

- ✗ The PEFC has no overall performance-based standard: widely different national standards are adopted in different countries.
- ✗ The PEFC certifies logging operations in the last remaining old-growth forests in Europe.
- ✗ The PEFC has no clear rules on certification: in Germany forests have been certified without being visited, while in Finland forests have been certified without the owner's knowledge. Once approved, forests in France will be certified through the PEFC scheme without having been seen by a certifier.
- ✗ The PEFC has unbalanced voting rights: one group of stakeholders (economic interests) has in-built dominance over all decisions.

SFI

- ✗ The SFI has a weak, flexible and non-comprehensive standard that fails to give a consistent and meaningful benchmark for responsible forest management. Operations applying for a certificate can modify the standard to better suit their own performance.
- ✗ The SFI scheme certifies large-scale clear-cutting in old-growth forests and logging on indigenous peoples' lands without their consent.
- ✗ There are inadequate monitoring and control mechanisms. No annual field visits are required.
- ✗ The SFI is controlled by the industry. There is no balanced participation of social and ecological interests in standard setting or decision-making.

CSA

- ✗ The CSA scheme has no overall performance-based certification standard: the operation applying for a certificate determines the level of performance requirements for a successful certification.
- ✗ The CSA scheme certifies clear-cutting in high conservation value forests and logging on indigenous peoples' lands without their consent.
- ✗ A Public consultation process is required, but results are completely non-binding on the company's forest practices and performance, severely limiting the utility of public performance.

FSC – The Only Credible Certification System

	FSC	PEFC	CSA	SFI
Certification of performance standards with clear minimum environmental and social thresholds.	Yes	No	No	No
Allows for equitable and balanced participation and decision making.	Yes	No	No	No
Includes credible chain of custody as a basis for product labelling.	Yes	No	No	No
Requires independent third party assessment and annual field audits.	Yes	No	Yes	No
Is transparent to the public and the parties involved.	Yes	No	No	No
Requires forest management unit level certification.	Yes	No	Yes	Yes
Is cost effective and voluntary.	Yes	No	Yes	Yes
Requires a clear commitment from managers towards improving forest management.	Yes	No	Yes	Yes
Is a global system, applicable in all regions and all sorts of tenure systems.	Yes	No	No	No

The Global Forest and Trade Network

PROGRESSIVE TIMBER COMPANIES IN PARTNERSHIP WITH SOCIAL & ENVIRONMENTAL ORGANISATIONS.
BY: TOM ROCHE.



Leaders for responsible forestry

"Estimates by FAO (2000b) show that global production of total roundwood reached 3335 million cubic meters in 1999. Just over half of this was woodfuel, about 90 percent of which was produced and consumed in developing countries. On the other hand, industrial roundwood production, totaling 1550 million cubic meters in 1999, was dominated by developed countries, which together accounted for 79 percent of total global production." (FAO - State of the World's Forests Report 2001)

Every year the world consumes billions of cubic meters of wood. The impact of this level of wood consumption has major implications for the future of the world's forests. China is now the world's third largest importer of primary forest products, after the United States and Japan. China's imports of forest products reached about €9 billion in 1999. The European market is also one of the big global markets for forest products. A number of trends have developed that are changing the way forests

are being exploited. Those changes may be permanent. They are influenced by globalization trends, environmental and social pressures.

Initial discussions between WWF and progressive forest/timber companies have led to the development of partnerships aimed at progressing responsible forest management. The number of companies who are members of individual country/regional Forest and Trade Networks (formerly called buyers groups) that support credible certification is growing rapidly.

Poor-practice and illegal logging are still wide-spread and more and more industry based certification schemes are developing with lower standards causing confusion in the market-place. While forest certification is now a reality in the market-place, the challenge for the next few years is to build on these foundations and ensure long

term improvements to forest management world-wide. The Global Forest and Trade Network will play a critical role in meeting this challenge by supporting multi-stakeholder-based forest certification.

Forest and Trade Networks, seen in the past as exclusive retailer clubs or Buyers Groups, now span the industry from forest owner to architect, manufacturer to retailer. This growing alliance is one of the most positive results of the certification movement, bringing together a large range of stakeholders to work for the benefit of forests and people. These Networks are open to any organization that supports the objective of improved forest management and credible independent certification. There are more than 800 member companies, from small producers to world leading companies such as Home Depot and IKEA.

The members of the Global Forest and Trade Network are committed to gradually producing, trading and/or sourcing independently certified forest products. Nineteen networks are active in nearly 30 countries. They operate in Austria, Australia, Belgium, Brazil, France, Germany, Sweden, Denmark, the Netherlands, North America, Russia, Spain, Switzerland, the U.K., Japan, Hong Kong, China, South Korea and Ireland.

In Ireland we have six members of the Irish Sustainable Forestry & Timber Initiative (ISF&TI) soon to be renamed the Irish Forest & Trade Network. They have signed up to the objectives of the Global Forest & Trade Network. However, individual members of the Irish network are at varying stages in their development. They include:

- Abbey Woods Ltd, Timber Importers, Dublin
- Coillte-The Irish Forestry Board
- Duncan Stewart, Stewart & Sinnott Architects, Dublin
- Galtee Wood & Veneer Ltd, Wood Product Manufacturer, Co. Limerick
- Just Forests, Forest Conservation Organisation, Tullamore.
- Richard Burbidge (Ireland Ltd) Dublin.
- True Temper Ltd, Garden Tool Manufacturer, Cork
- WoodCom Ltd, Timber Importer, Co. Clare.

WHY ARE MEMBERS JOINING?

The Forest and Trade Networks are committed to helping organisations become leaders in the purchase, use and sale of environmentally friendly forest products. GFTN membership provides:

- tools to ensure legal wood sourcing
- access to environmentally aware markets
- advice on responsible wood and paper procurement policies
- cutting-edge information on timber trade
- research on forest industry trends

Companies recognise that by joining a Forest and Trade Network they are speaking with a common voice and can deliver a powerful message - working together as a growing alliance to create a better business and a better future.

If your company would like to join this network or if you require further information please contact Just Forests.

PRODUCER NETWORKS

To improve forest management in producing countries the GFTN runs producer-focused networks. These networks provide forest managers with training and support to help them achieve responsible forestry and certification. They also provide incentive by serving as gateways to markets for certified products. Members commit to a stepwise approach to certification, including initial audits, action plans and verification of progress, which aim to ensure that the timber they supply to domestic and/or international markets comes from responsibly managed forests.

The first producer network was established in Russia. Additional producer groups are currently under development in Latin America, Central and West Africa, South-east Asia and Eastern Europe.

CREDIBLE FOREST CERTIFICATION

The GFTN defines independently certified forest products as products that come from forests that have been independently assessed and certified as being well-managed according to a multi-stakeholder-based forestry standard. Just Forests in association with WWF considers the Forest Stewardship Council (FSC) to be the only credible global forest certification system at present. The FSC provides a dependable framework for standard setting, auditing, as well as product tracing and labelling, which can be applied worldwide. The FSC also ensures a multi-stakeholder standard setting process, where economic and ecological considerations are weighed together with the cultural values and needs of local communities and indigenous people. Chain-of-custody certification ensures that FSC-labelled products on the retail shelf can be traced back to known well-managed forests.

Please see page 37 for comparison chart on different forest certification schemes

Holders of FSC chain-of-custody (COC) certificates in Ireland

Grainger Sawmills Ltd FSC code: SGS-COC-0707 Address: Enniskeane Co.Cork **Contact person:** Carol Crean **Tel.:** 023 22800 **Fax:** 023 47698 **Email:** carol.crean@graingersawmills.ie **Issue date:** 24.05.01 **Expiry date:** 24.05.06 **Products:** Processing, kiln drying and onward sale of certified sawn timber and the production and sale of certified co-products (70% certified) **RJ Hall Ltd FSC code: SGS-COC-0668** Address: Homebright House, Hillview Road Belfast, BT14 7HP **Contact person:** Dennis Jones **Tel.:** 04890 351707 **Fax:** 02890 753 833 **Email:** halls@longwall.co.uk **Issue date:** 17.04.01 **Expiry date:** 17.04.06 **Products:** Rubberwood and beech **Coillte Sawmills FSC code: SGS-COC-0803** Address: Dundrum, Co. Tipperary **Contact person:** Seamus Heaney **Tel.:** 062 71101 **Fax:** 062 71491 **Email:** seamus.heaney@coillte.ie **Internet:** www.coillte.ie **Issue date:** 01.10.01 **Expiry date:** 01.10.06 **Products:** Saw milling and processing of hardwoods and Douglas fir, from Coillte woodlands **Murray Timber Products Ltd. - Ballygar Sawmill FSC code: SW-COC-570** Address: Ballygar, Co. Galway **Contact person:** Mr. Tony Hanlon **Tel.:** 0903 24688 **Fax:** 0903 24735 **Email:** tony@murraytimber.iol.ie **Issue date:** 01.09.01 **Expiry date:** 31.08.06 **Products:** Timbers **Murray Timber Products Ltd. - Ballygar Sawmill FSC code: SW-COC-569** Address: Ballygar, Co. Galway **Contact person:** Mr. Tony Hanlon **Tel.:** 0903 24688 **Fax:** 0903 24735 **Email:** tony@murraytimber.iol.ie **Issue date:** 01.09.01 **Expiry date:** 31.08.06 **Products:** Timbers **Laois Sawmills Ltd FSC code: SW-COC-578** Address: Ballymacken Portlaoise, Co. Laois, **Contact person:** Mr. Jim McNamara **Tel.:** 0502 21075 **Fax:** 0502 22892 **Email:** laoisawmillslimited@eircom.net **Issue date:** 01.09.01 **Expiry date:** 31.08.06 **Products:** Timbers **Masonite FSC code: SW-COC-325** Address: Carrick-on-Shannon Co. Leitrim **Contact person:** Mr. Roger Bruce **Tel.:** 0044 113 2587689 (sales) **Fax:** 0044 113 2590015 (sales) **Email:** rbruce@masonite.com **Internet:** www.masonite-europe.com **Issue date:** 01.08.00 **Expiry date:** 31.07.05 **Glennon Bros. Timber Ltd. FSC code: SW-COC-427** Address: Sawmills, Longford, Co. Longford **Contact person:** Mr. John Nugent **Tel.:** 043 46223 **Fax:** 043 46262 **Email:** john.nugent@gbt.ie **Issue date:** 15.10.00 **Expiry date:** 14.10.05 **Products:** Timber, Sawmilling coproducts **SmartPly Europe Ltd FSC code: TT-COC-1572** Address: Belview, Slieverue, Waterford **Contact person:** Mr. Neil Foot **Tel.:** 051 851233 **Fax:** 051 851130 **Email:** neil.foot@lpcorp.com **Issue date:** 26.01.01 **Expiry date:** 26.01.06 **Products:** Oriented Strand Board (OSB). **Woodfab, Ltd. FSC code: SW-COC-340** Address: Auhgrim, Co. Wicklow **Contact person:** Mr. Michael Lynn **Tel.:** 0402-36228 **Fax:** 0402-36293 **Email:** mlynn@woodfabtimber.ie **Issue date:** 01.07.00 **Expiry date:** 30.06.05 **Products:** Sawn Timber and saw-milling co.products **Earrai Coillte Chonnacht Teoranta FSC code: SW-COC-314** Address: Corr na Mona, Co. Galway **Contact person:** Mr. Colin Malloy **Tel.:** 092 48255 **Fax:** 092 48071 **Email:** colin@ecc.ie **Issue date:** 01.06.00 **Expiry date:** 31.05.05 **Products:** Timbers **A.S. Richardson & Co. Ltd FSC code: SW-COC-266** Address: Newtongore, Co. Leitrim. **Contact person:** Mr. Ashley Stewart **Tel.:** 049-433-3208 **Fax:** 049-433-3043 **Email:** ashley.stewart@balcas.com **Issue date:** 01.02.00 **Expiry date:** 31.01.05 **Products:** Sitka spruce **Willamette Europe, Ltd. FSC code: SW-COC-318** Address: Redmondstown, Clonmel, Co. Tipperary **Contact person:** Mr. Con Little **Tel.:** 052 21166 **Fax:** 052 21815 **Email:** clittle@willamette-europe.com **Issue date:** 01.06.00 **Expiry date:** 31.05.05 **Products:** Medium Density Fiberboard. **True Temper Limited FSC code: SGS-COC-0140** Address: Whites Cross, Cork, **Contact person:** Mr. Domhnall MacDomhnaill **Tel.:** 021 302433 **Fax:** 021 309004 **Email:** dmacdomhnaill@truetemper.ie **Issue date:** 21.06.98 **Expiry date:** 21.06.04 **Products:** Garden tools: digging spades, digging fork **Nordale Enterprises Ltd, T/A Banagher Sawmills FSC code: SW-COC-711** Address: The Sawmills, Banagher, Co Offaly. **Contact person:** Mr. Patrick Naughton **Tel.:** 0509 51194 **Fax:** 0509 51053 **Email:** banaghersawmills@eircom.net **Internet:** www.banaghersawmills.com **Issue date:** 01.04.02 **Expiry date:** 31.03.07 **Products:** Wood chips, sawdust, bark and mulch, lumber (sawn timber) **Davidson Industries FSC code: SGS-COC-088** Address: 14 Main Street, Rathfarnham Village, Dublin 14 **Contact person:** Mr. Peter Bonsall **Tel.:** 01 6766782 **Fax:** 01 6767350 **Email:** europe@davidson-ind.com **Internet:** www.davidson-ind.com **Issue date:** 14.01.02 **Expiry date:** 14.01.07 **Products:** Supply and distribution of flooring products.

Guidance Notes for Contractors Regarding Timber Purchasing.

From May 2001, Offaly County Council's responsible Timber Purchasing Policy came into effect.

THE POLICY STATES

With immediate effect, the Council will give preference to timber and timber products which carry the Forest Stewardship Council's (FSC) trademark, or other label from an equivalent internationally recognised, globally applicable, independent certification system for good forest management.

This will take into account environmental, ecological, biodiversity, social and economic needs, showing the timber (tropical, temperate or boreal, hardwood or softwood) or timber product is from a credible, responsible source.

With immediate effect, if FSC (or equivalent) trademarked timber proves to be unavailable, (documentation will be provided to prove that every attempt has been made to obtain certified sources before exploring alternatives - flexibility in terms of species specification should be pursued) contractors will, as a second resort only, use timber from a known source, and will attempt to gain as much assurance as possible that the forest is well-managed and will provide documentation of proof.

PLEASE TAKE NOTE!

- The FSC trademark (below) is an internationally recognised symbol for responsible forest management.
- Contractors should check at the tender stage if the timber merchant they propose to purchase from, stocks FSC endorsed timber and in what quantities. This can not be stressed strongly enough! Certified timber is not always as readily available as uncertified. The more notice that is given to a supplier, the better.
- As the timber once purchased may not physically carry the FSC trademark, check the invoice of the supplier, which should clearly state that FSC timber was supplied. There should be a code number that refers to the chain of custody certificate number, for example SA -COC-1022, or SGS/COC/0755/6525/0184. (Please see page 40). If the person invoicing you does not give a code number ask your supplier to provide the relevant information and to give it on future invoices.
- If you have difficulties sourcing FSC endorsed timber, please ring Tom Roche on 0506 23557 or email: goodwood-policy@justforests.org Tom works for the Tullamore-based forest conservation group Just Forests has agreed to assist this Council (free of charge) sourcing FSC timber as part of their Local Authority Project. You can also speak directly to the FSC in Mexico 0052 9 516 2110 or email: fscoax@fscoax.org
- The FSC certification of timber covers not only environmental and biodiversity issues, but also community relations, the human rights and land rights of indigenous peoples, workers rights and conditions, and future management, maintenance and monitoring of future operations.
- Please see opposite page for a list of companies dealing in FSC certified timber boards and building materials. You can also refer to the advertisements in the following pages.



For further information on FSC Forest Certification in Ireland please contact : Irish Forestry Certification Initiative (IFCI) at the Society of Irish Foresters (SIF) office Enterprise Centre, Ballintogher, Co Sligo. Tel: 071 64434 Fax: 071 34904 E-mail sif@eircom.net.

Just Forests would like to acknowledge the support from our main funders, which made this publication possible:

The National Committee for Development Education (NCDE)

The National Committee for Development Education (NCDE) was established in 1994 by the Tánaiste and Minister for Foreign Affairs under the auspices of Ireland Aid, the official development cooperation programme of the Irish Government. NCDE aims to promote and support Development Education in all sectors of Irish society.



Forest Service – Department of Communication, Marine and Natural Resources

The Good Wood Policy Guide has been financially supported by the Forest Service at the Department of Communication, Marine and Natural Resources. Forest Service policy is to ensure that all timber produced in Ireland is derived from sustainably managed forests.

Concern – Camden Street Dublin 2

Just Forests would also like to thank the following for their support and comments:

Advertisers: The World Wide Fund for Nature International (WWF-Int): World Society for the Protection of Animals (WSPA): GREENPEACE: Global Witness: Friends of the Earth International: Prof. Dr. Karl-Reinhard Volz, Institute of Forest Policy, University of Freiburg: Fergal Mulloy, Chairman, European Forestry Institute: Prof. Norman Myers: UNEP, Nairobi, Kenya: FSC-UK: Hank Cauley, FSC-USA: FERN, Brussels: National Council for Forest Research & Development (COFORD): Garrett McKeagney and staff of XO Design: FSC International: CRANN: Wild Ireland: The WORD magazine: Margareta Renstrom, Global Forest & Trade Network Europe: Rachel Shotton, WWF 95+Group Government Partnerships Co-ordinator: Offaly County Council: Society of Irish Foresters: Irish Forestry Certification Initiative (IFCI): Techno Teachers Association (formerly the Woodwork Teachers Association of Ireland).

Joe Kenny/Tony Dolan/Mary Humphreys for proof reading: Board Members of Just Forests.

Paperback of London and Coillte – The Irish Forestry Board, for jointly sponsoring the FSC-certified paper used in this publication.

Special thanks to the staff and 'Sustainability Task Force' members of The Royal Institute of the Architects in Ireland (RIAI) for their generous 'in-kind' support and comments. Official Launch of this publication by Mr. Brian Cowan, T.D., Minister for Foreign Affairs at the RIAI offices, 8 Merrion Square, Dublin 2, 25th September 2002.

Photos:

Front cover special thanks to: ©Carl Lyttle for permission to print his 'Woman & Child' photograph. ©Manoy Shah, BBC Wildlife Photographer 2000, for permission to print his award-winning 'Oranutang & Baby' photograph. Copyrights (all other photos) ©Still Pictures ©WSPA: ©Just Forests: ©WWF-International: ©WWF-UK ©FSC International: ©FSC-USA.

The Good Wood Policy Guide is published by Irish Woodworkers for Africa Ltd.,

T/A Just Forests. Company Registration No: 297353 Irish Charity Number: CHY10686 Registered Office: Bury Quay Tullamore Co Offaly Ireland. Tel: 0506 23557 Fax: 0506 25297 e-mail: woodlife@justforests.org Internet:www.justforests.org



The Good Wood Policy Guide is printed on FSC Context paper. Paperback of London supplied the paper. Certificate No: SGS-COC-0621. Context FSC paper is made from 75% recycled fibre and 25% certified pulp.

Design by XO Design 0506 43160 www.xodesign.com



Just Forests would like to thank the following advertisers for their support

coillte



A member of the Irish Sustainable Forestry & Timber Initiative

The logo of the Forest Stewardship Council indicates wood products that come from independently certified well-managed forests.



Coillte (Dundrum Sawmill)
Chain of Custody Certified by
SGS - Qualitas
Number: 503-COC-0993.

Enduring Tradition and Craftsmanship

This sense of endurance is symbolised in the durability of Irish hardwoods. Floors and furniture fashioned from native hardwoods are not just visually attractive - their quality is unmatched. The superior quality of the timber ensures they endure and, in the process of maturing, grow even more distinctive with age.

Coillte supplies Beech, Ash, Oak, Alder, Spanish Chestnut, Elm, Sycamore, Birch and Cherry.

**Coillte,
Dundrum Sawmill,
Dundrum,
Co. Tipperary.
Tel: 062 71101
Fax: 062 71491
Email: info@coillte.ie**

CERTIFIED TIMBER: LOOK NO FURTHER!



ECOTIMBER Ltd

Timber from well-managed forests

6 Salisbury Avenue
Penarth, Cardiff CF64 3JA, UK
Tel: 029 20 707444; Fax: 029 20 711133
Email: info@ecotimber.co.uk
Website: www.ecotimber.co.uk

Ecotimber Ltd is agent for A. van den Berg BV, The Netherlands' leading suppliers of FSC-certified hardwoods

We can offer:

- Substantial volumes of FSC-certified hardwoods available from stock
- Timber supplied to customer requirements, e.g. kiln-dried or machined to specification
- Advice on choosing the right timber for the job
- Competitive prices



waste paper bins



viewing platforms and bridge



seating



Description: Viewing platforms and bridge
Client: York Millennium Bridge Trust Ltd
Architects: Robert Rumney Architects, Sevenoaks
Engineers: Whitby Bird & Partners, London
Main Contractor: C. Spencer Ltd, Barnow on Humber
Woodworking Contractors: Michael Beiringer Design, London (seating; decking; handrails)
Woodscape, Chorley (bollards; waste paper bins)

Timber species used: Cumaru
Completion Date: 2001

The logo of the Forest Stewardship Council(FSC) indicates wood products that come from independently certified well-managed forests.

www.ecotimber.co.uk



AMES TRUE TEMPER

The leading manufacturer of lawn and garden tools

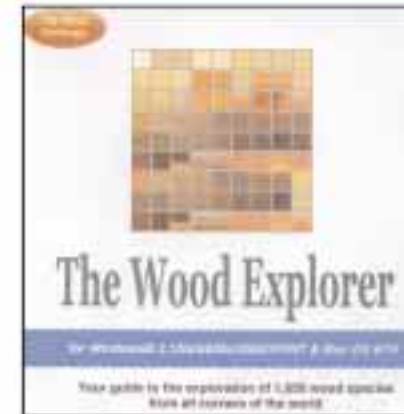
Quality Deserves Respect

True Temper was the first company to receive FSC certification for lawn and garden tools. To bring you the highest quality tools, True Temper only uses wood from well-managed and sustainable forests. Our respect for the environment has now been recognised by the Forest Stewardship Council.



503-COC-0140 FSC Trademark © 1996 Forest Stewardship Council A.C.

TRUE TEMPER LIMITED
Whites Cross, Cork, Ireland.
Tel: +353 21 4302433
Fax: +353 21 4304621
Email: sales@truetemper.ie



The Wood Explorer CD
Special Introductory Offer:
Only 49.95
Order Now!

The Wood Explorer CD

The world's most comprehensive source of information on wood. The Wood Explorer CD is the companion CD to the Wood Exchange web site, giving you the most power to unlimited access to all 1,650 timber species and all the information in our database.



Available from our Irish distributor (Eire & N. Ireland):

Justwood, 113 Arden Vale, Tullamore, Co. Offaly.
Tel: 0506 51633
Email: justwood@ireland.com
Web Site: www.thewoodexchange.info

www.thewoodexchange.info

Richard Burbidge (Ireland) Ltd,
5 Fitzwilliam Place, Dublin 2.
Tel: 01 6622788
Fax: 01 6760438
Email: info@richardburbidge.co.uk
Web Site: www.richardburbidge.co.uk



ENVIRONMENTAL STATEMENT

Summary:
In the final analysis, as an existing or prospective customer, it is you who will influence our policy on the environment.
Above all we want you to help us make progress in helping to resolve the complex environmental challenges we face today.
A copy of this policy is also available on our website, where updates on initiatives and new programmes for improvement will be posted.
We welcome your comments and input on any aspect of our environmental policy.
Richard Burbidge - Chairman and Executive Director.

DECORATIVE MOULDINGS



SmartPly™
has just
got even
smarter

For more information about SmartPly, contact:
LP Marketing Department,
Louisiana-Pacific Europe,
Belweg, Steenbeek,
Waterford, Ireland
Tel: +353 (0) 51 851233
E-mail: smartply@lpcorp.com
Internet: www.lp-europe.com

SmartPly, from Louisiana-Pacific, has outsmarted the competition once again. Not content with being awarded the coveted Forest Stewardship Council (FSC) certification, LP has gone further than any FSC certified OSB panel manufacturer in meeting its environmental responsibilities...

At least 90% of the timber used in the manufacture of SmartPly comes from well managed forests independently certified according to the rules of the Forest Stewardship Council.

And SmartPly's environmental credentials don't end there. Every aspect of its manufacture shows towards minimal ecological impact and lowest pollution. Moreover, in keeping with current trends towards healthier homes, an added benefit of the wood in the manufacturing process of SmartPly is that it is naturally resistant to mold, mildew and insect attack, giving them the lowest emissions rating of any commercially available OSB products.

SmartPly products have an impressive string of letters (and numbers) after their names... They satisfy EN 300 and BS2015:1998, Irish Agreement Board (IAB) and Eurobond as well as FSC requirements.

SmartPly meets the criteria of today's most demanding, highest-value, highest-specification structural applications and satisfies the highest environmental standards. And, with its unique, dedicated marketing team, no OSB panel comes with more intelligent, more helpful technical support.

From Roofing to Flooring, Cladding to Portable Buildings - 4 years in the construction business, you need SmartPly OSB.

Panel products simply don't come smarter!

For more information about SmartPly, contact:
LP Marketing Department,
Louisiana-Pacific Europe,
Belweg, Steenbeek,
Waterford, Ireland
Tel: +353 (0) 51 851233
E-mail: smartply@lpcorp.com
Internet: www.lp-europe.com

Clarks Wood Company Ltd / Y. Goldberg & Sons Ltd
Importers of Hardwood, Softwood & Timber Sheet Materials since 1798

Award Winners - Environmental Initiative of the Year 1999

FSC Certified Timber Products

All American Hardwood Species Available

Sustainable Forest Systems Exotic Hardwood from Paraguay

Guatambu - Cupay - Yvyra ro - Yvyra pta - Peroba - Curapay -

Accredited by the Forest Stewardship Council and Chain of Custody Certified by the Soil Association Number SA-CoC-1022.

Suppliers of independently certified timber from well-managed forests:

Hardwood-
Oak, Maple, Cherry, Ash

Softwood-
Unsorted and V™ Joinery Grade

Sheet Material-
MDF, Chipboard, OSB, Plywood, Hardboard, Decoratives.

Clarks Wood Company Ltd
Silverthorn Lane
Bristol - BS2 0QJ

Tel: 0044 117 971 6316
Fax: 0044 117 972 3119
Email: info@clarkswood.com
Web: www.clarkswood.co.uk

EXPEDITION AMZONAS: 2001

Due to the inability of our shippers in Brazil to satisfy our demands for verifiable and traceable evidence of the legality of log sources we have no alternative but to suspend purchases of Mahogany from Brazil and concentrate our business in the sale of certified hardwood and timber products.

We continue to source Forest Stewardship Council (FSC) certified hardwoods worldwide. These include exotic species of tropical hardwoods and enable today's joinery manufacturers to have a wider choice of timbers which meet the environmental standards they seek. Further details available on request.

ACTION SPEAKS LOUDER THAN WORDS

Someone with €20 a month to spare will do more for a child in the Third World than all the TV programmes, press reports and concerned words put together.

Because by your actions you'll give a child a chance -all it takes is a spare €20 per month

For more information contact:

ACTIONAID Ireland,
Unity Building, 16/17 Lwr. O'Connell Street
Dublin 1.

Tel: 01 8787911
Email: info@actionaidireland.org
Web: www.actionaidireland.org

Forestry
a growing part of Ireland's future

IFIC is the representative body of the major Irish forestry organisations. The forest and wood processing industry provides 16,000 Irish jobs. IFIC works with government and industry to help develop the forest and timber industry in Ireland through Sustainable Forestry.

Our members

- COFORD
- Colithe Teoranta
- Enterprise Ireland
- Irish Christmas Tree Growers Association
- Irish Forest Nursery Association
- Irish Forestry Contractors Association
- Irish Forestry Unit Trust
- Irish Timber Council
- Irish Timber Growers Association
- Louisiana-Pacific-Europe
- Masonite Ireland
- National Co-Operative Farm Relief Services
- None-so-Hardy Ltd.
- Society of Irish Foresters
- Western Forestry Co-Operative Society Ltd.
- Willamette Europe Ltd.

Irish Forest Industry Chain
Confederation House,
84/86 Lower Baggot Street
Dublin 2

Tel: (01) 605 1674 Fax: (01) 638 1674 Email: ific@ibec.ie

SGS QUALIFOR

your partner in **Forest Management**
and **Chain-of-Custody Certification**



SGS QUALIFOR is an internationally recognised programme for forest management certification, accredited by the Forest Stewardship Council (FSC). Products originating from forests certified by **SGS QUALIFOR** may carry the FSC trademark

SGS QUALIFOR services

Forest management certification

We assess forest management performance to evaluate compliance with certification requirements.

Chain-of-custody certification

We audit the processing chain from the forest gate to the consumer, checking that certified products are not mixed with material from uncertified forests.

International training

We provide international training in the implementation of forest management and chain-of-custody certification requirements.



The SGS Group

Founded in 1878, the **SGS Group** is one of the world's largest auditing, inspection, testing and verification organisation. Truly global and benefiting from a unique international network, the SGS Group is able to provide its international clientele with a comprehensive



range of services in more than 145 countries. SGS has no manufacturing, trading or financial interests which could compromise its independence. Its guarantee of independence, its reputation for professionalism, integrity and impartiality, as well as its remarkable international network, place the SGS Group in a unique position.

The SGS QUALIFOR Programme

This is the SGS Group's Forest Certification Programme, internationally accredited by the Forest Stewardship Council to carry out forest management and chain of custody certification.

SGS QUALIFOR

The world's leading forest certification programme, **SGS QUALIFOR** has forest management certificates covering over 15 million hectares of forest world-wide. The programme is currently active in more than 40 countries around the world, with over 70 approved assessors. Forest management and chain of custody certification by **SGS QUALIFOR** allows clients to use the FSC trademark on certified products and to communicate to their customers that these products originate from well-managed forests.

For further details please contact:

SGS QUALIFOR Administrator
58 St Aldates, Oxford, OX1 1ST
United Kingdom

Telephone +44 (0)1865 202345

Email forestry@sgsgroup.com

Fax +44 (0)1865 790441

Website www.qualifor.com

Or your local **SGS QUALIFOR** representative

FSC trademarks © 1996 Forest Stewardship Council. FSC Accredited (FSC-COC-1010)

words are not enough

Everyone knows that actions speak louder than words. And conserving the world's forests requires action. Yours. Mine. Everyone's. Now there's something new that we can do. We can look for the Forest Stewardship Council label when we buy garden furniture, paper, flooring, timber and other products made from wood.

The FSC label guarantees that the forests where the wood came from are being managed responsibly, so they'll be around for future generations to enjoy. That's why the Irish Forestry Certification Group and the Tree Council of Ireland are all proud and active supporters of the non-profit Forest Stewardship Council.

You don't have to be a movie star to be an action hero. Help conserve the World's forests. Look for and purchase products carrying the FSC label.

For more information contact:
Just Forests, Bury Quay, Tullamore.

Tel: 0506 23557 Fax: 0506 25297
Email: fsc-info-irl@justforests.org



www.fsc.org

www.justforests.org

Pierce Brosnan photo donated by Greg Gorman.

FSC Trademark copyright symbol 1996 Forest Stewardship Council A.C.
FSC-CECR 0042